

Rebel Risk Advisor

UNLV

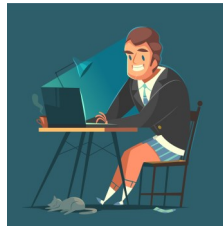
Risk Management & Safety — rms.unlv.edu — (702) 895-4226



Special points of interest:

- Safety Data Sheets can be found on the RMS website. Push the Big Yellow Button on the RMS home page.
- AED: Specific location of AED's on campus can be found on the RMS Website.

Introduction: The Rebel Risk Advisor will provide timely information to various stakeholders throughout the campuses about risk and safety topics issued every other month.



Cyber Risks: Working from Home

As the campus community continues to work from home during this pandemic, hackers and criminal groups are beefing up their efforts also. You need to exercise due diligence with safety practices to defend against cyber risks. Some recommendations are:

- ▶ Home Wi-Fi Networks— Beware of close quarter living environments, changing default passwords, utilization of WPA2-AES security.
- ▶ Ensure security updates / patches are applied to personal devices.
- ▶ Use strong passwords.
- ▶ Watch for an increase of phishing attempts.
- ▶ Avoid downloading company/personnel information on your home device.

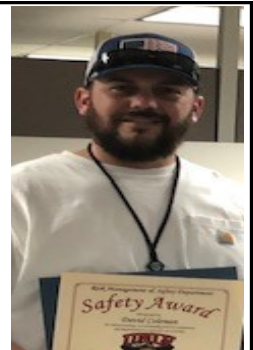
Additional information can be found on Information Technology website: <https://www.it.unlv.edu/teaching-working-remotely/employees>

Summer is coming - Heat Stress safety tips:

- Drink plenty of water
- Dress appropriately
- Eat light
- Stay inside when possible



DAVE COLEMAN, recipient of the RMS Safety Award!!!!



Dave demonstrates a "can do" attitude as he interacts with various departments to address safety issues and resolve concerns. Specifically, Dave worked with RMS to access and map confined space locations on campus, assisted with potential asbestos issues during remodeling jobs, and collaborated to develop and implement a plan for the correction of outstanding work orders that led to enhanced safety on campus. He has also lent his expertise to provide project information and action needed for completion.

Dave is a valuable asset to the university and his efforts are sincerely appreciated.

In the Spotlight



Michele Washington is the Claims Administration Coordinator for UNLV, CSN and NSC. She has over 29 years of industry experience and 14 years with NSHE. Responsibilities include workers' compensation, ergonomics, international travel and vehicle use programs. Michele is a Certified Ergonomic Assessment Specialist, Certified Defensive Driving Instructor and Nevada Notary Public.

New Safety Courses and WebEx Now Available in "Vault"

As we work from home it is important that our workspace is as ergonomic as possible so that our home office works for us, not against us. The new course in the VAULT online training system, "Ergonomics for Working From Home", is a quick training with 4 videos that will help you adjust your workspace. The short videos cover chair adjustment, how to set up your monitor, keyboard, and mouse, and also a link to the RMS ergonomics webpage.

New WebEx training courses are coming out soon—check the RMS website and training calendar: <https://www.unlv.edu/rms/safety-training/calendar>.