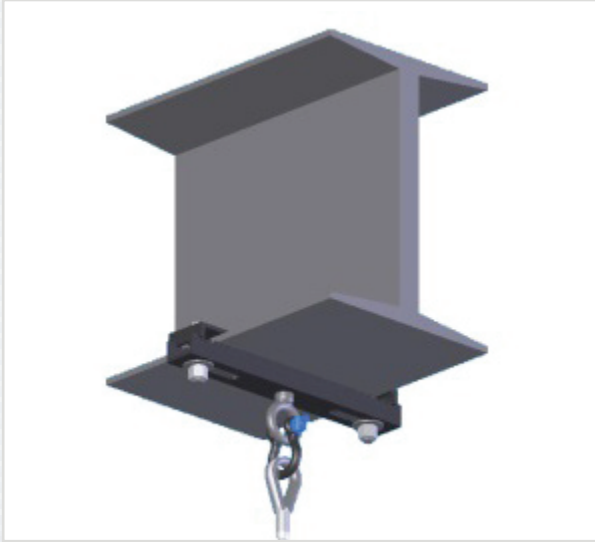


# BC3-8 Beam Clamp

CHANNEL STYLE WITH ONE SUSPENSION POINT

BEAM-WARE



## ONE TON BEAM CLAMP

Standard, pre-engineered channel style beam clamps anchor to a building's structure and offer a safe and predictable method of rigging grids, clusters, arrays and other objects from overhead. This channel style beam clamp is comes equipped with a centrally located rigging point for suspending objects from wire rope, rigging chain, spansets, etc.

Use one of two channel style beam clamps to provide a load rated overhead rigging widths ranging between 3" to 12"(305mm). This beam clamp model provides a fast, easy and safe way to rig direct loads, bridles and hitches from overhead and a hand wrench is all that is required to secure this clamp. The achieve the stated working loads.



### KEY FEATURES:

- ▶ Single load-rated center hang point
- ▶ Provides safe load-rated hang point to 45° off center.
- ▶ Clamp two models secure to beam flanges ranging from 3" - 8" / 76mm - 203mm

### OPTIONAL ACCESSORIES:

- ▶ See Wire Rope Datasheet
- ▶ See Rigging Components Datasheets

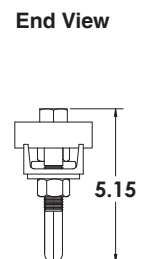
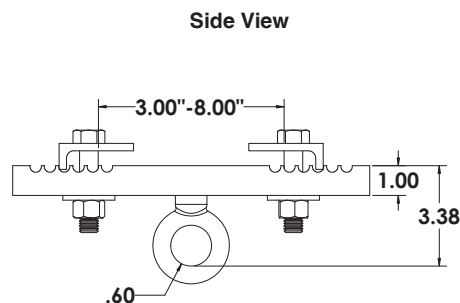
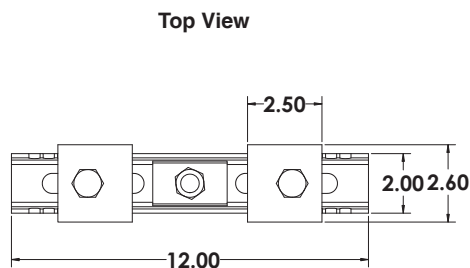
### SPECIFICATIONS:

**Material:** All Steel Components  
**Width:** (BC3-8) 3" to 8" / 76mm to 203mm  
**Finish:** Powder Coat  
**Color:** Black  
**Design Factor:** 4:1  
**WLL:** 2100 lb / 952.544 WLL (VERTICAL)  
**45 DEG. WL:** 1680 lb / 762.0352 Kg  
**DO NOT EXCEED 45° off hang points**

### PACKAGE CONTENTS:

**1 pc** Beam Clamp Channel  
**2 pcs** Locking Angle Plate  
**2 pcs** Flat Washer, 5/8"  
**2 pcs** Nyloc Nut, 5/8-11

### DIMENSIONS:



Rated for indoor use.

### ALWAYS INSTALL SAFETY CABLES

**WARNING:** Mounting and/or suspension of audio and video equipment requires experienced professionals. Improperly installed loudspeakers can result in property damage, personal injury and/or liability to the installing contractor.