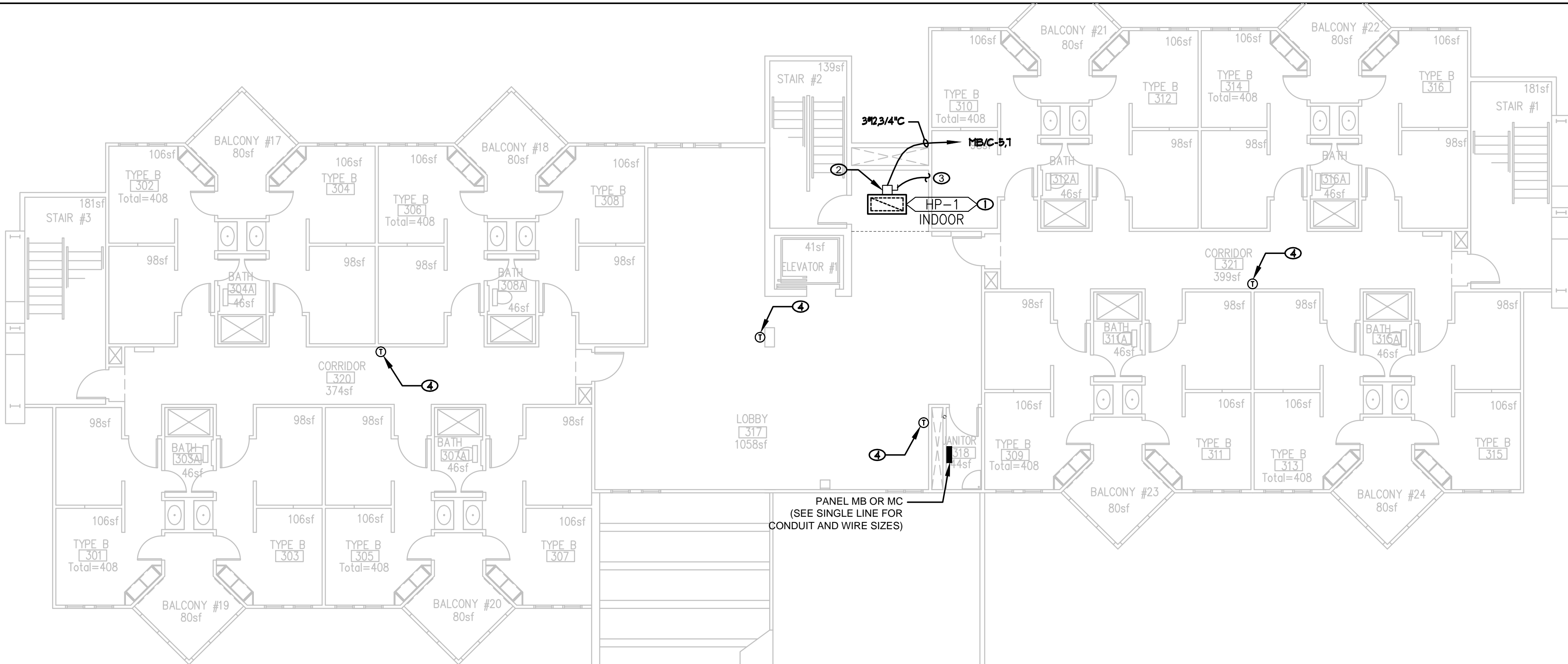
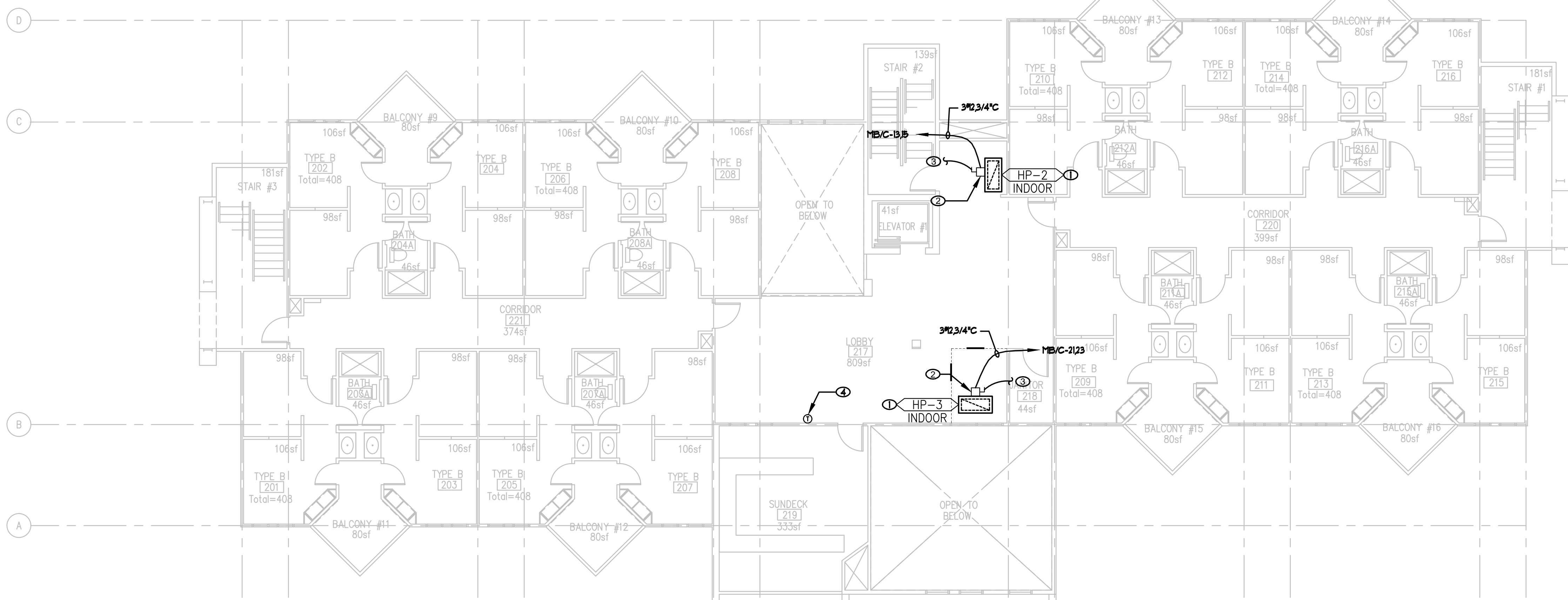


P:\2015 Jobs\1501 UNLV Dormitory HVAC and Roofing Replacement\DWG\BL DQ DEPT\Phase 2\1501.dwg, 11/3/2016 12:23:45 PM

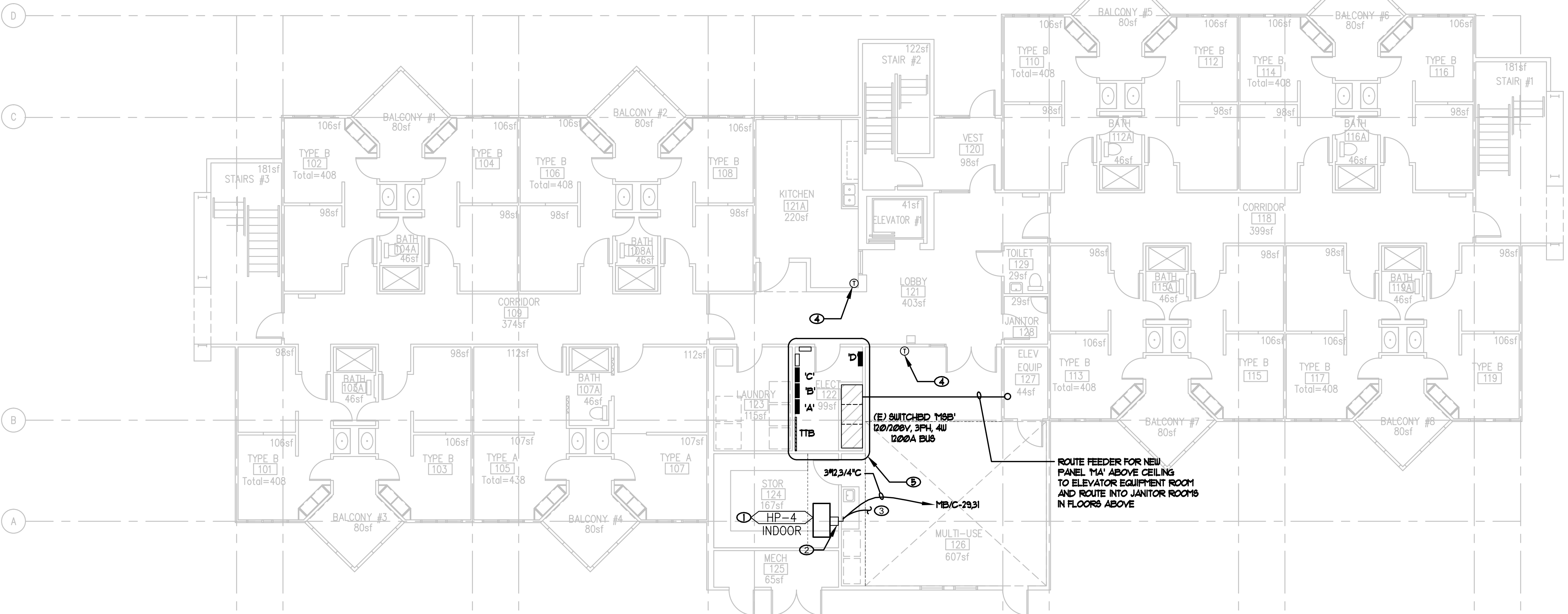
B PARTIAL THIRD FLOOR PLAN - BUILDINGS B & C - ELECTRICAL
1/8" = 1'-0"



B PARTIAL SECOND FLOOR PLAN - BUILDINGS B & C - ELECTRICAL
1/8" = 1'-0"



A PARTIAL FIRST FLOOR PLAN - BUILDINGS B & C - ELECTRICAL
1/8" = 1'-0"



KEY NOTES

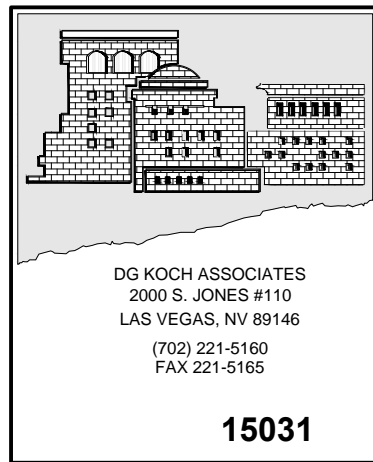
- COORDINATE EXACT LOCATIONS OF MECHANICAL EQUIPMENT AND POWER CONNECTION LOCATIONS WITH MECHANICAL CONTRACTOR PRIOR TO INSTALLATION.
- PROVIDE NEMA 1 DISCONNECT SWITCH PER MANUFACTURER'S RECOMMENDATIONS AS SHOWN ON PLAN. VERIFY LOCATION WITH MECHANICAL CONTRACTOR PRIOR TO INSTALLATION ROUGH-IN.
- INDOOR UNIT FAN MOTOR POWER INTERCONNECTED WITH OUTDOOR UNIT. SEE ROOF PLAN FOR CONTINUATION AND MECHANICAL DRAWINGS FOR ADDITIONAL INFORMATION.
- THERMOSTAT FOR HVAC CONTROLS. PROVIDE CONTROL WIRES AS INDICATED ON MECHANICAL DRAWINGS.
- LOCATION OF EXISTING ELECTRICAL ROOMS SHOWN FOR INFORMATION ONLY.

STAMP:

REVISIONS:

UNLV DORMITORY HVAC AND
ROOFING REPLACEMENT
Phase 2 - BUILDINGS B AND C
BID DOCUMENTS

CONSULTANTS:



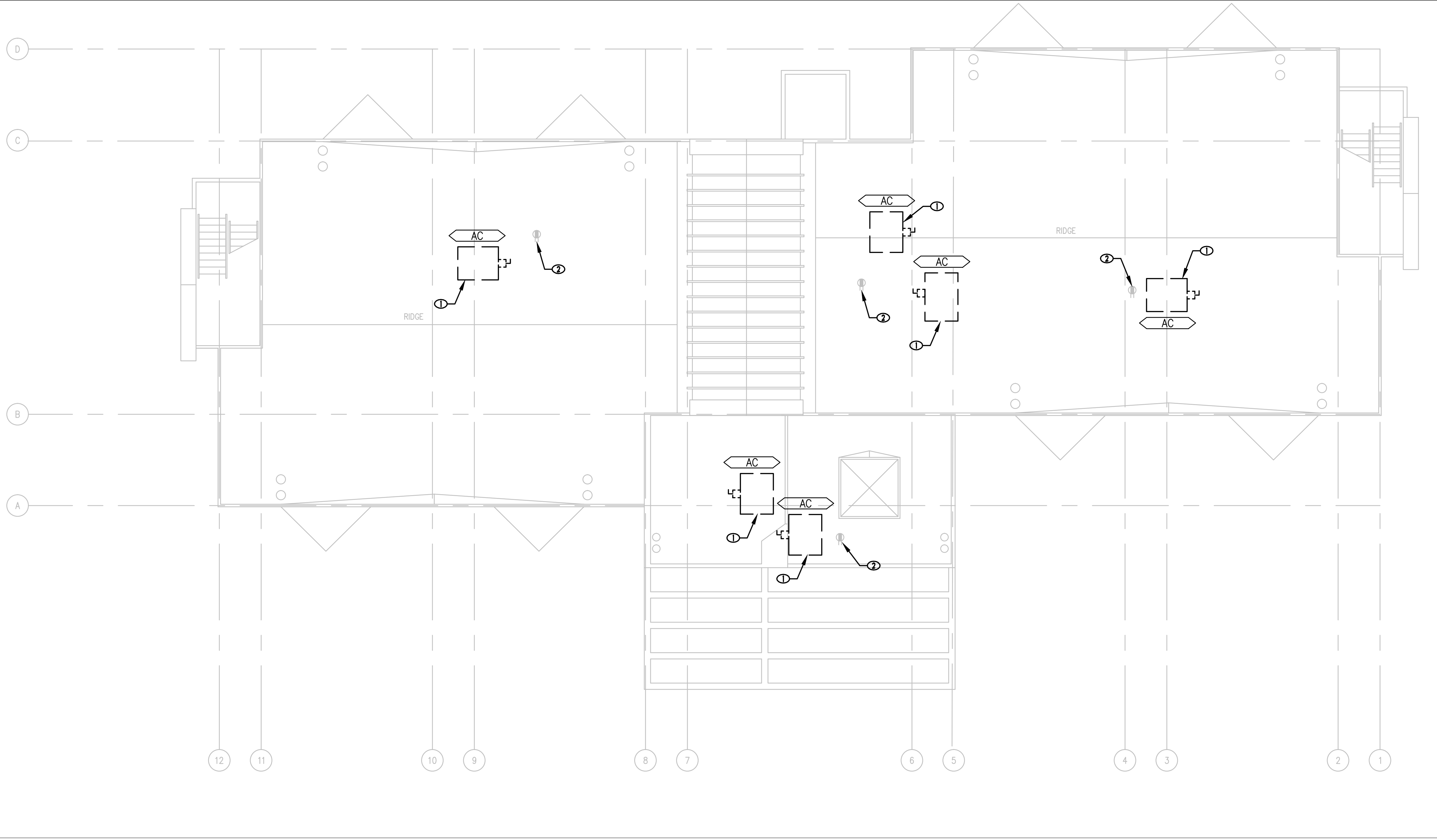
SHEET TITLE:
**FIRST, SECOND
& THIRD FLOORS
PLANS BUILDINGS
B & C
ELECTRICAL**

DATE: 09-29-15

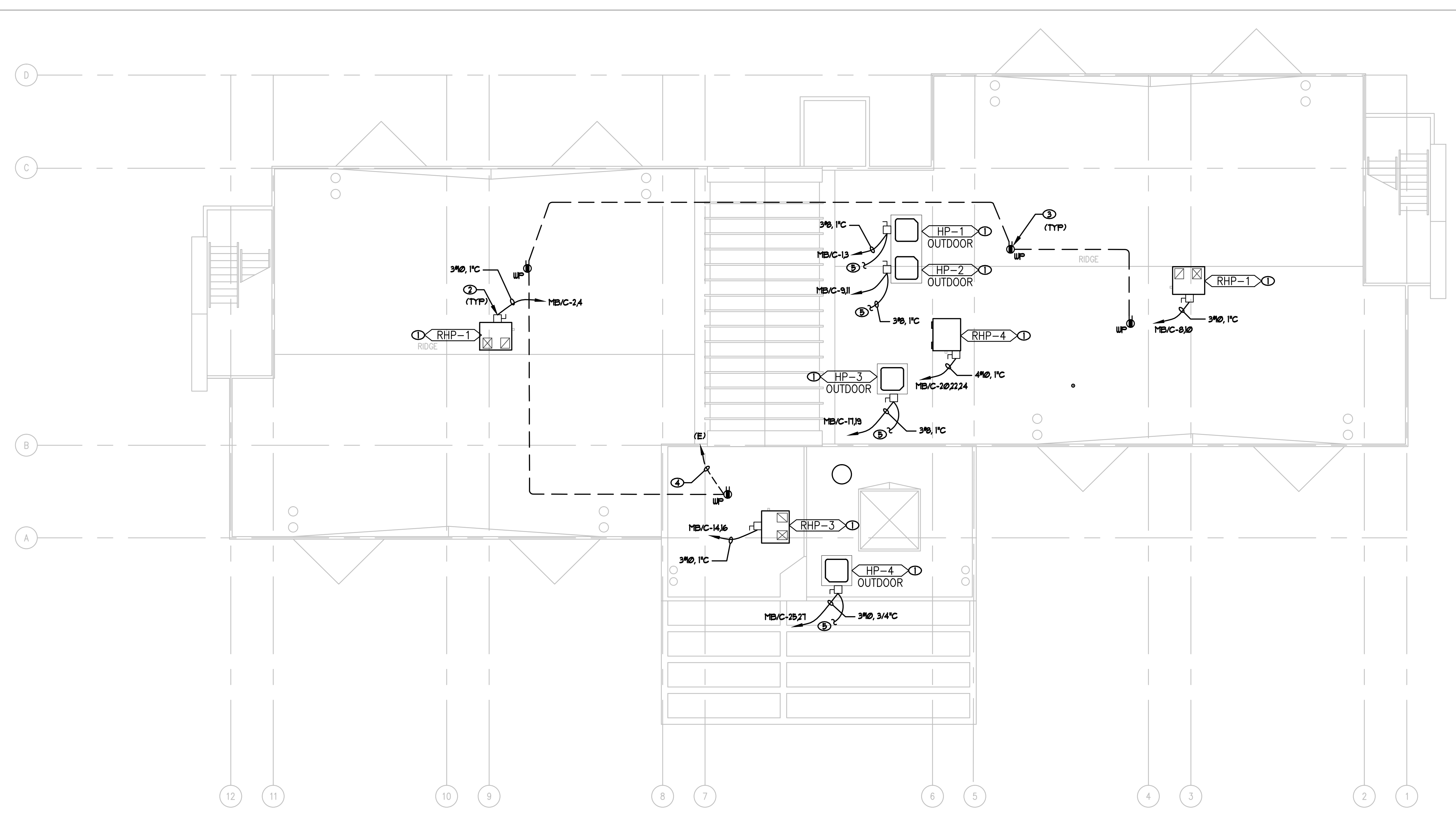
SHEET:

E1.01

P:\2015_Abs\1501 UNLV Dormitory HVAC and Roofing Replacement\DWG_BLDG DEPT\Phase 2 E1.02.dwg, 11/3/2016 12:53:57 PM



A DEMOLITION ROOF PLAN - BUILDINGS B & C - ELECTRICAL
1/8" = 1'-0"



B NEW ROOF PLAN - BUILDINGS B & C - ELECTRICAL
1/8" = 1'-0"

DEMOLITION KEY NOTES ○

- EXISTING HVAC TO BE DEMOLISHED AND RETURNED TO OWNER. REMOVE EXISTING WIRE FOR POWER AND CONTROLS BACK TO POINT OF CONNECTION AND MAINTAIN EXISTING CIRCUIT FOR THE INSTALLATION OF NEW MECHANICAL.
- DAMAGED EXISTING WP RECEPTACLE. DISCONNECT AND RECONNECT WITH NEW WP RECEPTACLE AS REQUIRED.

STAMP:

REVISIONS:

NO.	DESCRIPTION	DATE

UNLV DORMITORY HVAC AND ROOFING REPLACEMENT
Phase 2 - BUILDINGS B AND C
BID DOCUMENTS

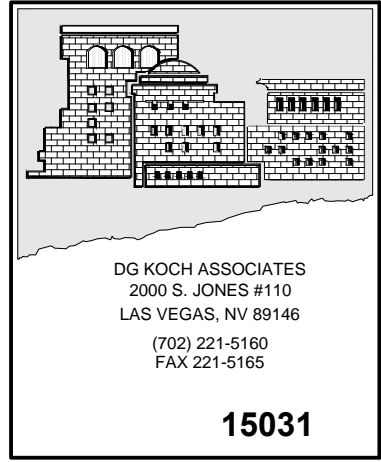
KEY NOTES ○

- COORDINATE EXACT LOCATIONS OF MECHANICAL EQUIPMENT AND POWER CONNECTION LOCATIONS WITH MECHANICAL CONTRACTOR PRIOR TO INSTALLATION.
- PROVIDE N3R DISCONNECT SWITCH (RKS FUSES PER MANUFACTURER'S RECOMMENDATIONS) AS SHOWN ON PLAN. VERIFY LOCATION WITH MECHANICAL CONTRACTOR PRIOR TO INSTALLATION ROUGH-IN. (TYPICAL)
- EXISTING RECEPTACLE. PROVIDE NEW GFCI (WR RATED) AND WEATHERPROOF COVER.
- MAINTAIN EXISTING CIRCUIT.
- INTERCONNECTED WITH CORRESPONDING INDOOR UNIT. MECHANICAL DRAWINGS FOR ADDITIONAL INFORMATION.

GENERAL NOTES

- SEE E3.01 FOR TYPICAL ROOF DETAILS.

CONSULTANTS:

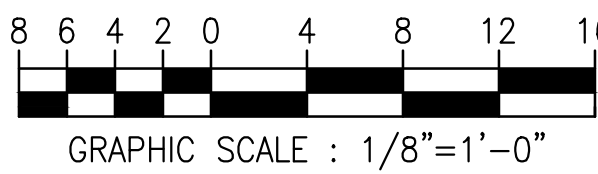


SHEET TITLE:
DEMO AND NEW ROOF PLANS BUILDINGS B & C ELECTRICAL

DATE: 09-29-15

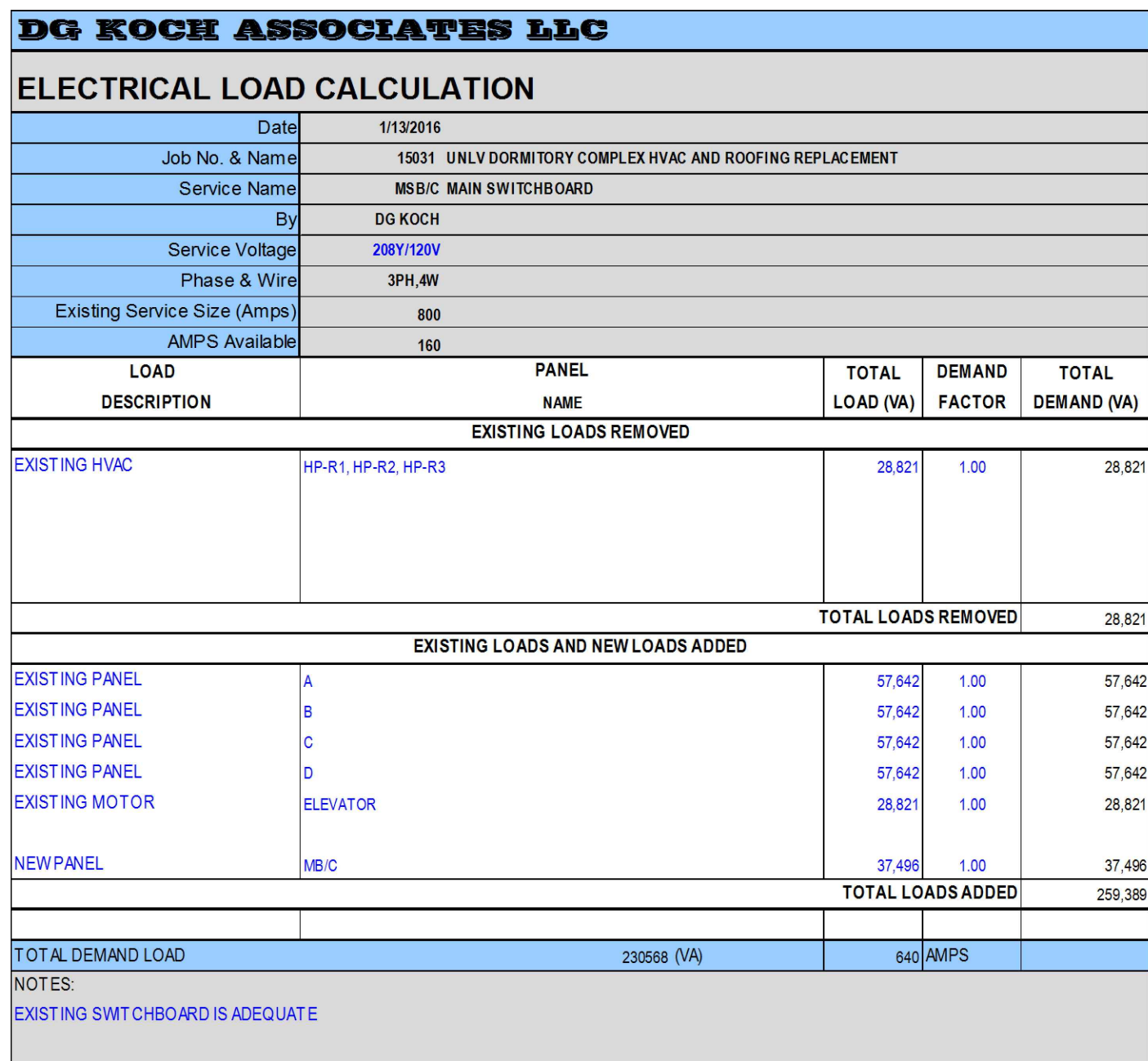
SHEET:

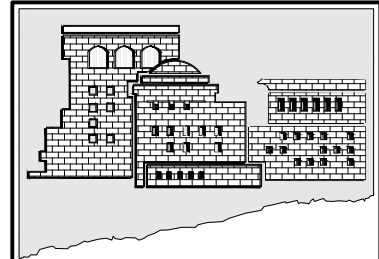
E1.02

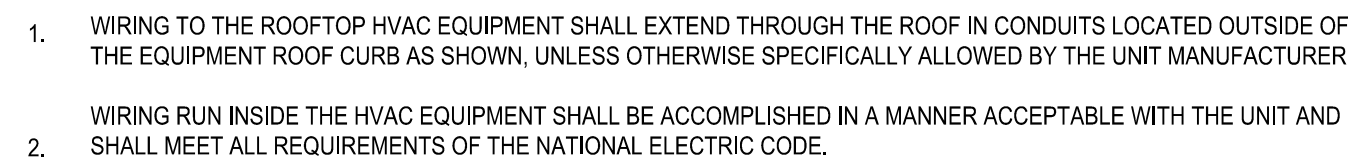


R NEW SINGLE LINE DIAGRAM, LOAD CALC AND PANEL - BUILDINGS B & C

NO SCALE



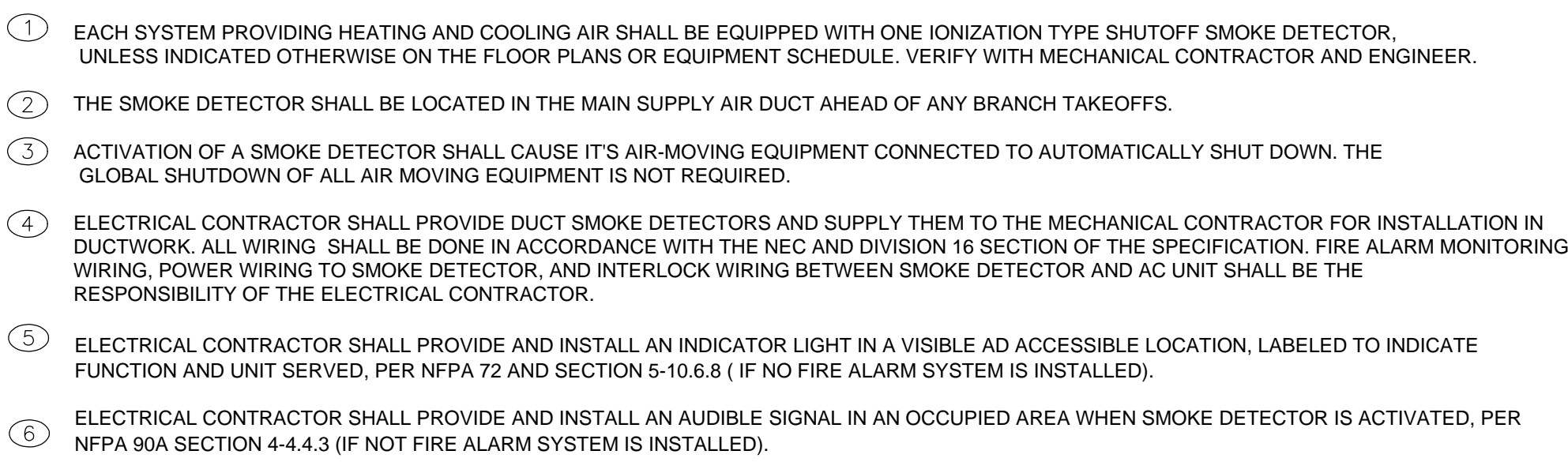
KEY NOTES ○		STAMP:
<div>1. EXISTING HVAC TO BE REMOVED AND RETURNED TO OWNER.</div> <div>2. DISCONNECT CONDUITS FROM HVAC UNIT AND PULL WIRE BACK TO EXISTING POINT OF CONNECTION.</div> <div>3. EXISTING JBOX TO BE REMOVED. DISCONNECT AND CAP CONDUIT AND ABANDON IN PLACE.</div> <div>4. LEAVE BREAKER AND FUSE IN SWITCHBOARD AND LABEL AS SPARE.</div> <div>5. DISCONNECT AND REMOVE EXISTING BREAKER AND FUSE IN PREPARATION FOR NEW PANEL.</div>	REVISIONS:	
<div>UNLV DORMITORY HVAC AND ROOFING REPLACEMENT</div> <div>Phase 2 - BUILDINGS B AND C</div> <div>BID DOCUMENTS</div>		
KEY NOTES ○		
1. MODIFY EXISTING BUS TO ACCEPT NEW BREAKER		
GENERAL NOTES		
<div>A. THE DESIGN PROFESSIONAL HAS PERFORMED ALL REQUIRED SHORT CIRCUIT CALCULATIONS. THE AIC RATING INDICATED FOR EACH DEVICE IS ADEQUATE TO PROTECT THE EQUIPMENT AND THE ELECTRICAL SYSTEM.</div> <div>B. THE DESIGN PROFESSIONAL HAS PERFORMED ALL REQUIRED VOLTAGE DROP CALCULATIONS AND ALL BRANCH CIRCUITS AND FEEDERS IN COMPLIANCE WITH NEC 210-19(A) FPN NO. 4.</div> <div>C. ALL EQUIPMENT SHOWN LIGHT ON THE SINGLE LINE DIAGRAM IS EXISTING AND TO REMAIN UNLESS NOTED OTHERWISE.</div>		<div>CONSULTANTS:</div> <div><div>DG KOCH ASSOCIATES 2000 S. JONES #110 LAS VEGAS, NV 89146 (702) 221-6160 FAX 221-6162</div><div>15031</div></div>
		<div>SHEET TITLE:</div> <div>SINGLE LINE DIAGRAMS, LOAD CALC, PANEL - BLDGS B & C</div>
		<div>DATE: 09-29-15</div>
		<div>SHEET:</div> <div>E2.01</div>



CONDUIT, WIRE SIZE AND GROUNDING FOR HVAC UNITS		
HACR BRKR SIZE	CONDUIT & WIRE SIZE	<p>Diagram illustrating the grounding connection for an HVAC unit. The diagram shows a cross-section of the unit's base with a conduit entering from the left. Inside the unit, the conduit is connected to a ground bushing, which is then connected to an equipment grounding conductor. This conductor is further connected to a grounding strap, which is attached to the bottom panel of the HVAC unit. Labels indicate: TERMINATE ON SUPPLIED GROUNDING LUG INSIDE EQUIPMENT, GROUND BUSHING, EQUIPMENT GROUNDING CONDUCTOR, GROUNDING STRAP, CONDUIT, and BOTTOM PANEL OF HVAC UNIT (TYPICAL).</p>
40A	1" C-3#8	
45A	1" C-3#6	
50A	1" C-3#6	
60A	1" C-3#6	
70A	1-1/4" C-3#4	
80A	1-1/4" C-3#3	
90A	1-1/4" C-3#3	
100A	1-1/4" C-3#2	
125A	1-1/2" C-3#1	
150A	1-1/2" C-3#1/0	
175A	2" C-3#2/0	
200A	2" C-3#3/0	
225A	2" C-3#4/0	
250A	2-1/2" C-3#250	

HVAC GROUNDING DETAIL

THE CONTRACTOR SHALL BE RESPONSIBLE FOR FINAL COORDINATION OF ALL ELECTRICAL FEEDERS AND CIRCUIT BREAKERS WITH THE MANUFACTURER'S WRITTEN DATA FOR EACH MECHANICAL DEVICE PRIOR TO SUBMITTAL OF ANY ELECTRICAL EQUIPMENT FOR REVIEW. NO ADDITIONAL COMPENSATION WILL BE ALLOWED FOR ANY CHANGES TO ELECTRICAL FEEDERS OR CIRCUIT BREAKERS REQUIRED FOR ANY MECHANICAL DEVICES.



NO SCALE



NO SCALE

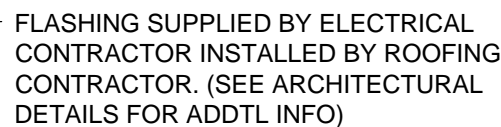
NO SCALE

NO SCALE

2	NO SCALE
---	----------



NO SCALE



NO SCALE

UNLV DORMITORY HVAC AND ROOFING REPLACEMENT

Phase 2 - BUILDINGS B AND C
BID DOCUMENTS

1503

E3.01