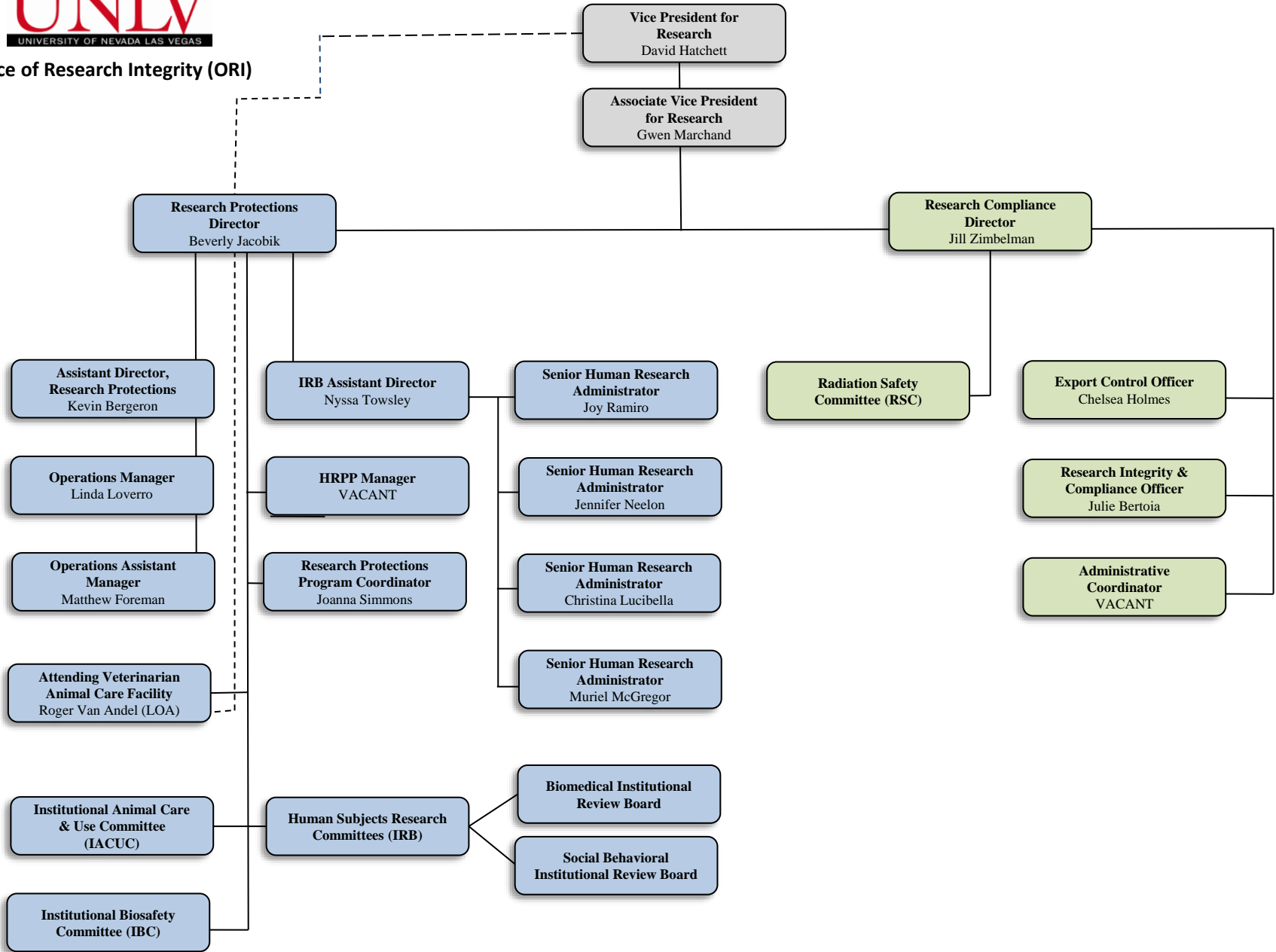


**Office of Research Integrity (ORI)**



## Office of Research Integrity (ORI) Organizational Chart

David Hatchett, Vice President for Research

Gwen Marchand, Associate Vice President for Research

- **Research Compliance and Security**
  - Jill Zimbelman, Research Compliance Director
    - Chelsea Holmes, Export Control Officer
    - Julie Bertoia, Research Integrity and Compliance Officer
    - VACANT, Administrative Coordinator
  
- **Research Protections Program**
  - Beverly Jacobik, Research Protections Director
    - Joanna Simmons, Research Protections Program Coordinator
  
  - **Biological Research Program**
    - Roger Van Andel (LOA), Attending Veterinarian, Animal Care Facility
    - Kevin Bergeron, Assistant Director, Biological Research Programs
      - Linda Loverro, Manager, Animal Care Facility
        - Matthew Foreman, Assistant Manager, Animal Care Facility
          - VACANT, Biological Research Technician
  
  - **Human Subjects Research**
    - Nyssa Towsley, Assistant Director, IRB
      - Joy Ramiro, Senior Human Research Analyst
      - Jennifer Neelon, Senior Human Research Analyst
      - Christina Lucibella, Senior Human Research Analyst
      - Muriel McGregor, Senior Human Research Analyst
    - VACANT, HRPP Manager
  
- **Regulatory Committees**
  - Institutional Animal Care & Use Committee (IACUC)
  - Human Subjects Research Committees (IRB)
    - Biomedical Institutional Review Board
    - Social & Behavioral Institutional Review Board
  
- **Safety Committees**
  - Radiation Safety Committee (RSC)
  - Institutional Biosafety Committee (IBC)