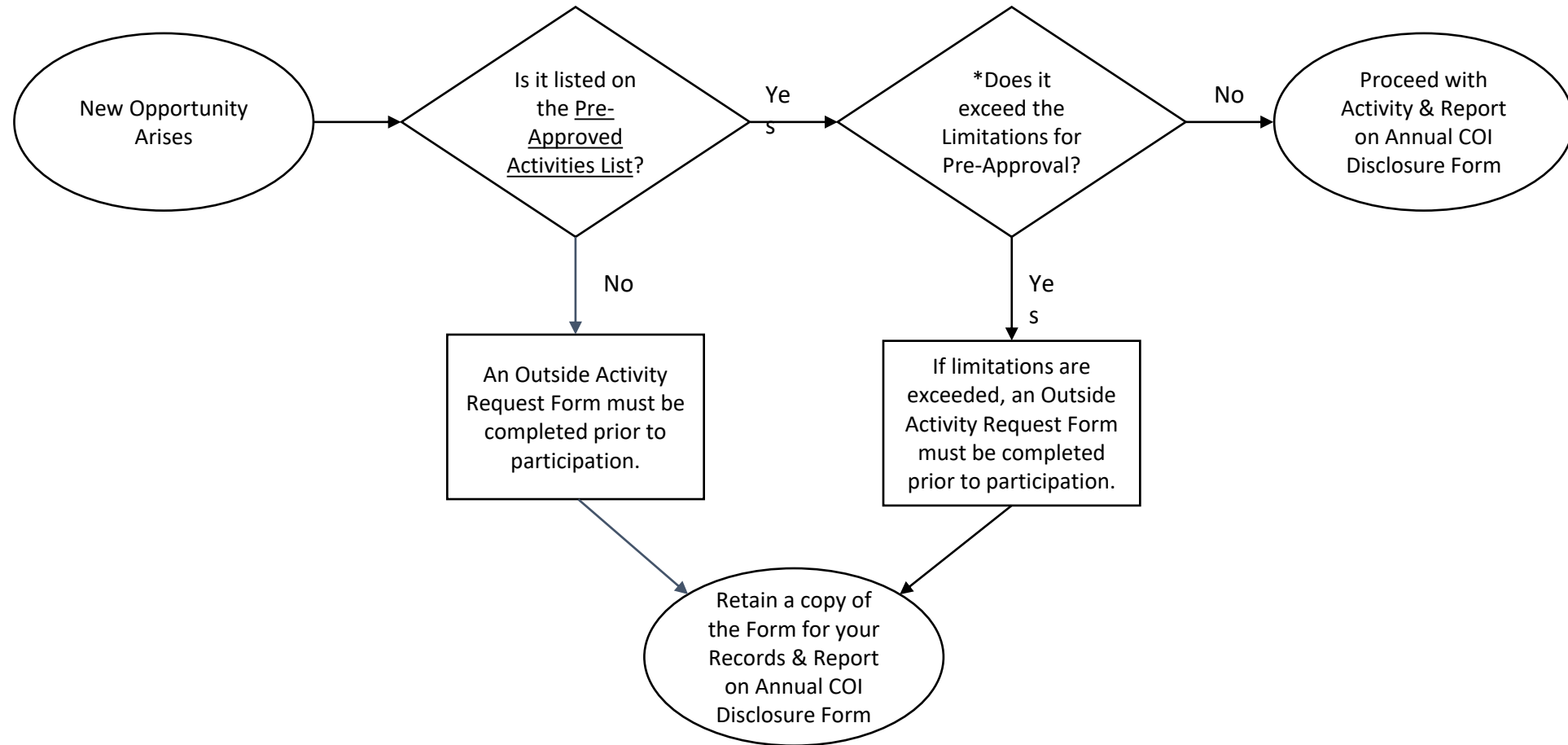


## Outside Compensated Activities Flowchart



### \*Limitations for Pre-Approved Activities:

- 1) Pre-Approved Activity must not be extensive in time and effort or interfere with your responsibilities at UNLV; and
- 2) Total compensation does not exceed \$3,000 in a calendar year (royalties/passive income are not reported as activities).

# Outside Compensated Activities Flowchart

## New Opportunity Arises

- If it IS listed on the [Pre-Approved Activities List](#)
  - Does it exceed the Limitations for Pre-Approval?\*
  - \*Limitations for Pre-Approved Activities: 1) Pre-Approved Activity must not be extensive in time and effort or interfere with your responsibilities at UNLV; and 2) Total compensation does not exceed \$3,000 in a calendar year (royalties/passive income are not reported as activities).
  - Yes – If limitations are exceeded, an Outside Activity Request Form must be completed prior to participation.
    - Retain a copy of the Form for your Records & Report on Annual COI Disclosure Form
  - No – Proceed with Activity & Report on Annual COI Disclosure Form
- If it IS NOT listed on the [Pre-Approved Activities List](#)
  - An Outside Activity Request Form must be completed prior to participation.
  - Retain a copy of the Form for your Records & Report on Annual COI Disclosure Form