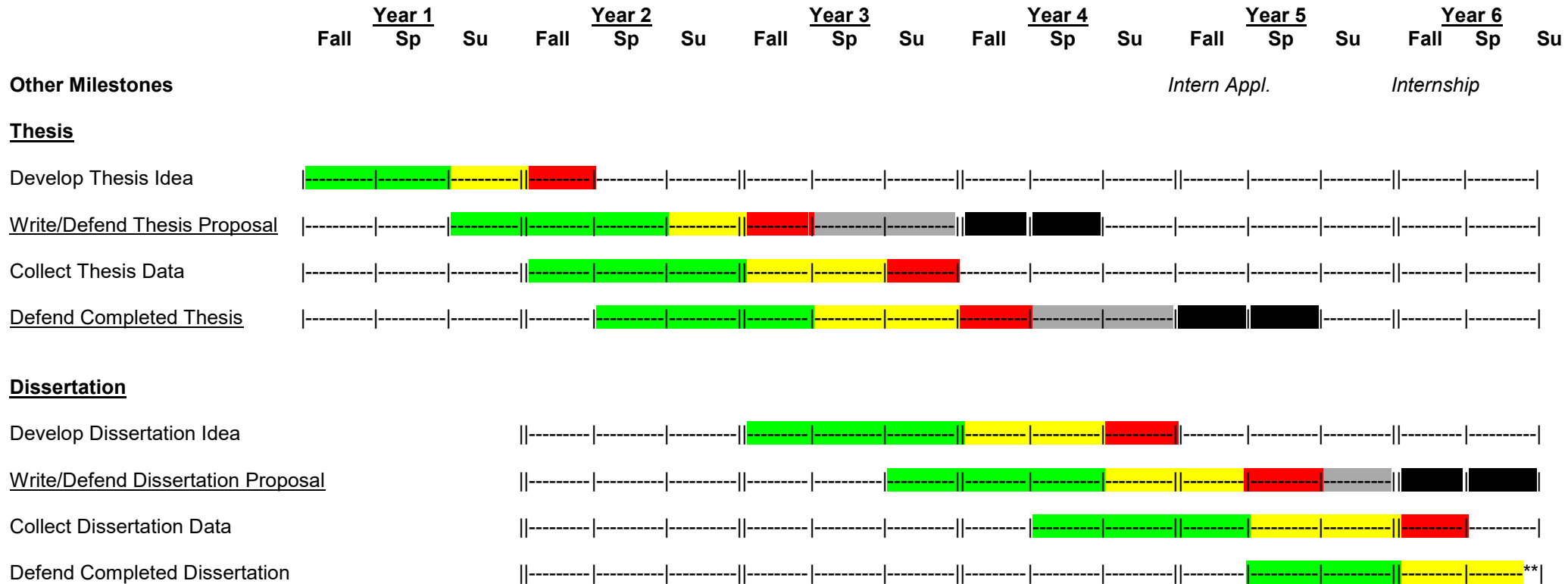


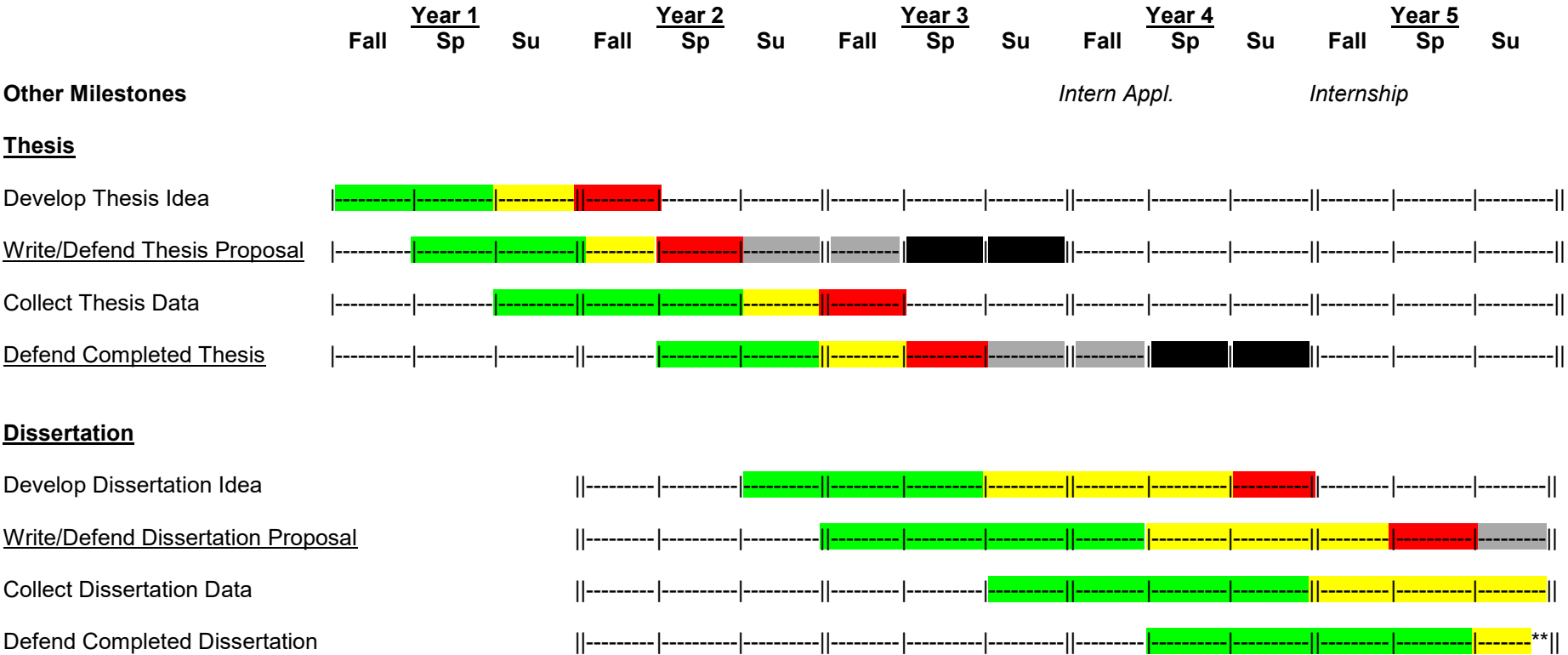
Progress Timeline for the UNLV Clinical Psychology Doctoral Program: 6-Year Plan – DEFAULT OPTION



**Note: Graduate College’s “Eight Year Rule” applies to completing all program requirements, including dissertation and internship (six years for those with an incoming Master’s degree).

This diagram illustrates adequate progress for important program milestones. Those periods indicated by green are “accelerated,” those indicated by yellow are “typical,” and those indicated by red are “marginal.” For those milestones that are underlined: if you do not complete the milestone before the end of “marginal” period you will be placed on department-level probation (gray area) on May 15 of that year. Continued failure to make progress when on department-level probation will result in placement on Graduate College-level probation (black area) on November 15 of that year and possible loss of subsequent funding or dismissal from the program. Note that the “black area” for the dissertation proposal would apply to the spring of one’s sixth year of study.

Progress Timeline for the UNLV Clinical Psychology Doctoral Program: 5-Year Plan



**Note: Graduate College’s “Eight Year Rule” applies to completing all program requirements, including dissertation and internship (six years for those with an incoming Master’s degree).

This diagram illustrates adequate progress for important program milestones. Those periods indicated by green are “accelerated,” those indicated by yellow are “typical,” and those indicated by red are “marginal.” For those milestones that are underlined: if you do not complete the milestone before the end of “marginal” period you will be placed on department-level probation (gray area) on May 15 of that year. Continued failure to make progress when on department-level probation will result in placement on Graduate College-level probation (black area) on November 15 of that year and possible loss of subsequent funding or dismissal from the program. Note that the “black area” for the dissertation proposal would apply to the spring of one’s sixth year of study.