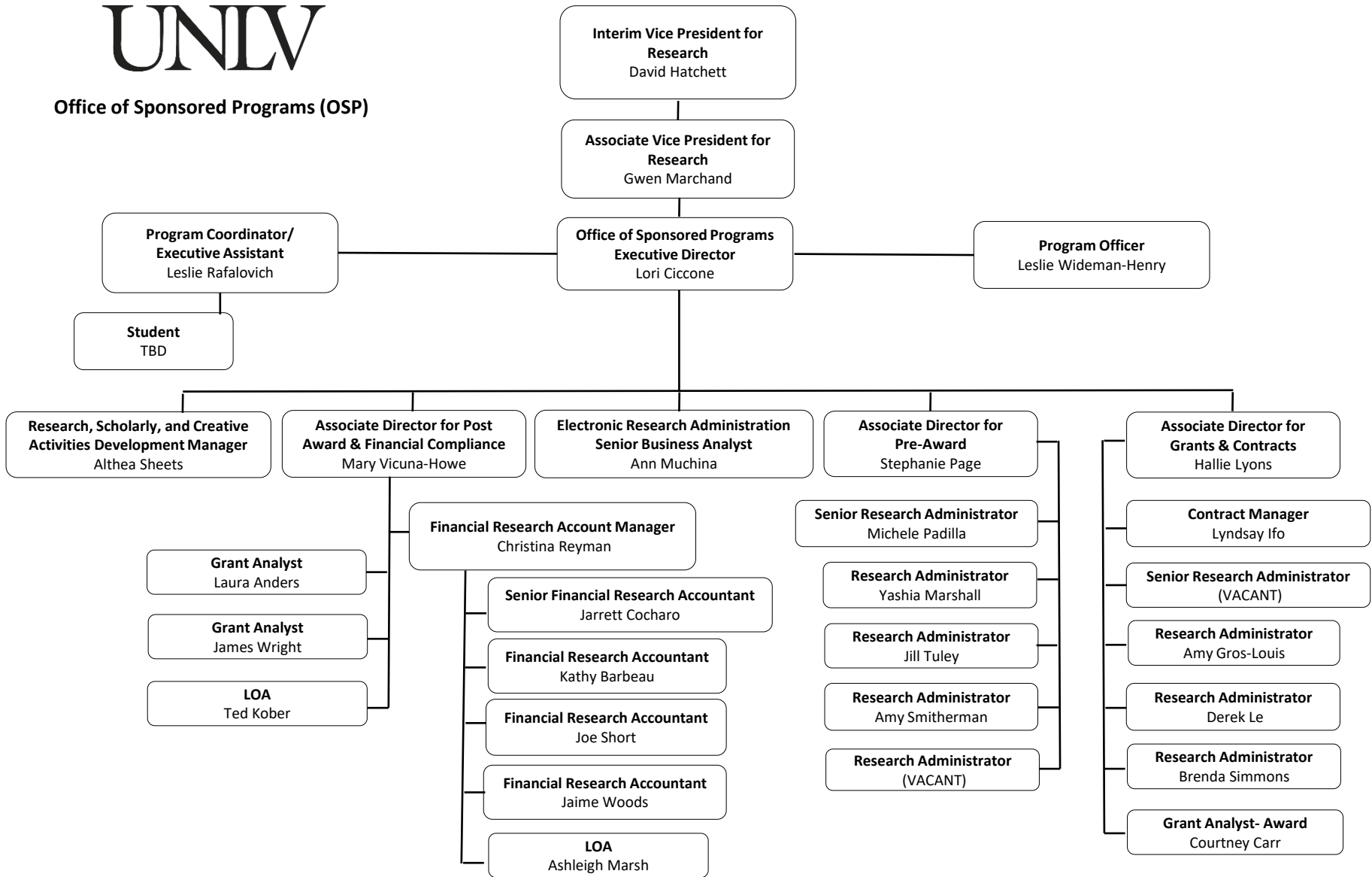




Office of Sponsored Programs (OSP)



## Office of Sponsored Programs Organizational Chart

- David Hatchett, Interim Vice President for Research
  - Gwen Marchand, Associate Vice President for Research
    - Lori Ciccone, Executive Director, Office of Sponsored Programs
      - Leslie Rafalovich, Program Coordinator/Executive Assistant
        - Vacant, Student
      - Leslie Wideman-Henry, Program Officer
      - Althea Sheets, Research, Scholarly, and Creative Activities Development Manager
      - Mary Vicuna-Howe, Associate Director for Post Award & Financial Compliance
        - Laura Anders, Grant Analyst
        - James Wright, Grant Analyst
        - Ted Kober, LOA
        - Christina Reyman, Financial Research Account Manager
          - Jarrett Cocharo, Senior Research Financial Accountant
          - Kathy Barbeau, Financial Research Accountant
          - Joe Short, Financial Research Accountant
          - Jaime Woods, Financial Research Accountant
          - Ashleigh Marsh, LOA
      - Ann Muchina, Electronic Research Administration Senior Business Analyst
      - Stephanie Page, Associate Director for Pre-Award
        - Michele Padilla, Senior Research Administrator
        - Yashia Marshall, Research Administrator
        - Jill Tuley, Research Administrator
        - Amy Smitherman, Research Administrator
        - Vacant, Research Administrator
      - Hallie Lyons, Associate Director for Grants and Contracts
        - Lyndsay Ifo, Contract Manager
        - Vacant, Senior Research Administrator
        - Amy Gros-Louis, Research Administrator
        - Derek Le, Research Administrator
        - Brenda Simmons, Research Administrator
        - Courtney Carr, Grant Analyst-Award