

Biotechnology Research

Studies on Degenerative Diseases: Blindness and Alzheimer's Disease

Dr. Nora B. Caberoy
Associate Professor
School of Life Sciences
Phone: 702-774-1501
Email: nora.caberoy@unlv.edu

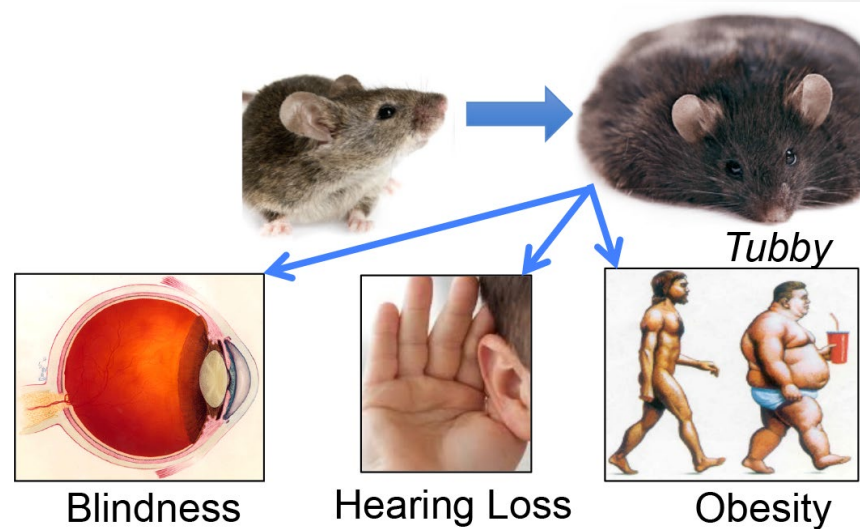
Expertise:

- Phagocytosis
- Retinal cell biology
- Retinal degenerative diseases (*Retinitis pigmentosa*, Age-related macular degeneration)
- Functional proteomics by phage display
- Alzheimer's disease therapy

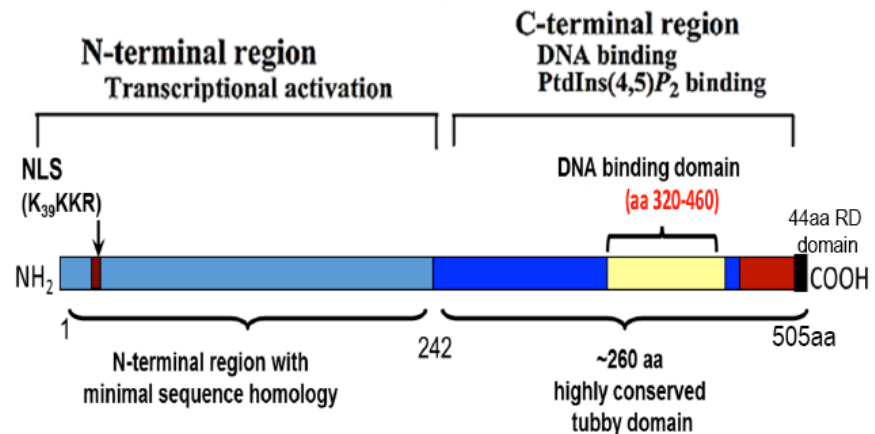
Delineating molecular mechanisms of blindness, hearing loss, and obesity

Mutation in Tubby gene resembles human syndromes:

- Hearing and/or vision - *Usher's*, *Retinitis pigmentosa*
- Obesity and sensory deficits - *Bardet Beidl*, *Alstrom's*
- Pathological mechanisms unknown

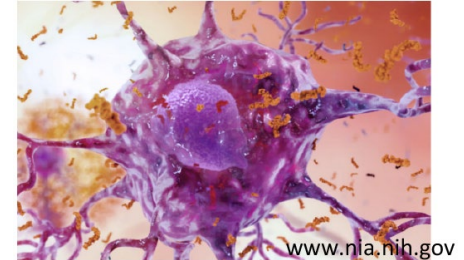
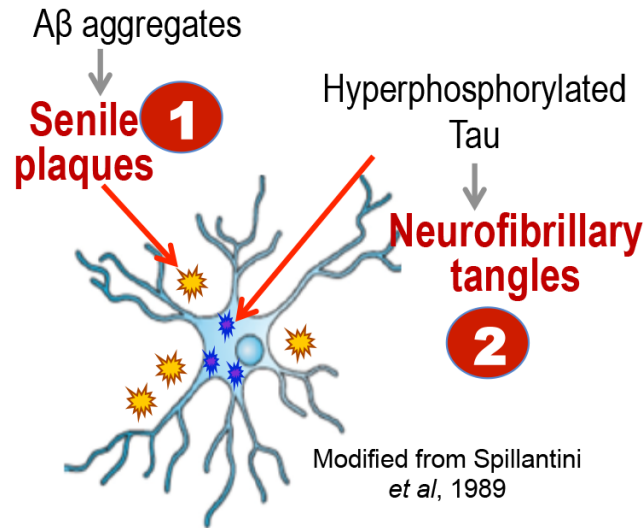
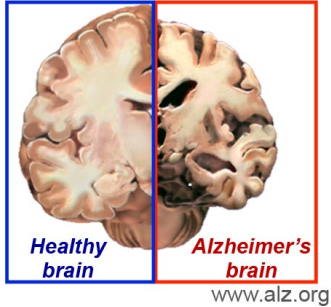


- Characterizing Tubby as a transcription factor
- Globally identifying genes regulated by Tubby
- Unraveling Tubby protein-protein interaction network



Redirecting phagocytosis of amyloid beta from inflammatory to non-inflammatory pathway

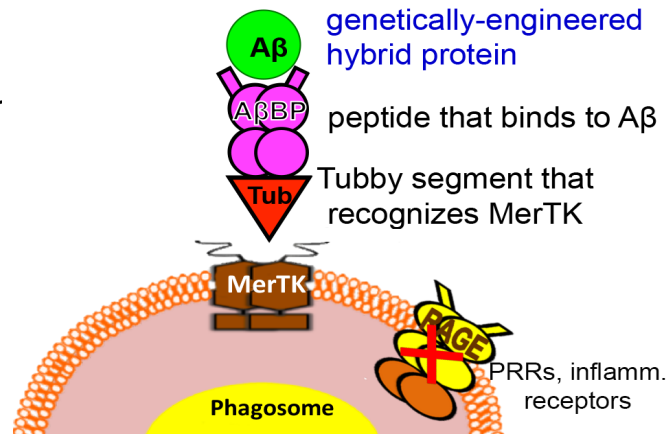
Alzheimer's Disease (AD): Pathological hallmarks



3. Massive brain inflammation

Strategy:

- engineer hybrid proteins
- binds oligomeric and fibrillar amyloid beta
- sequesters and directs phagocytic clearance of amyloid beta through non-inflammatory pathway



Integrative Physiology

Dr. Allyson Hindle

Assistant Professor

School of Life Sciences

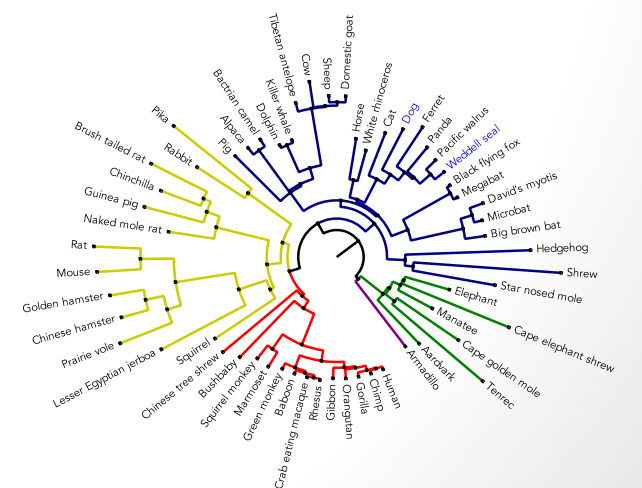
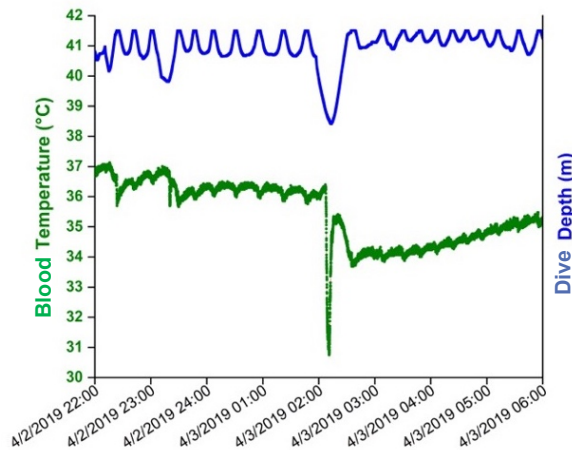
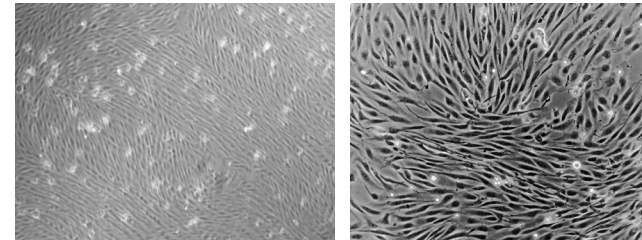
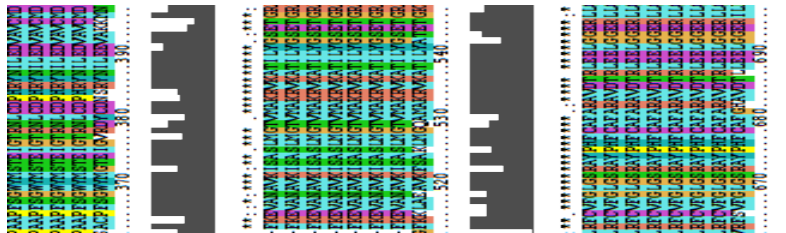
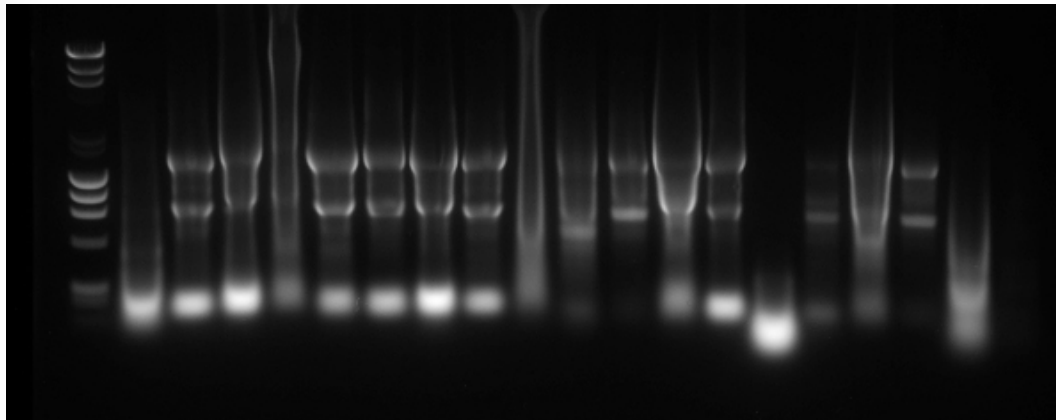
Phone: 702-895-4521

Email: allyson.hindle@unlv.edu

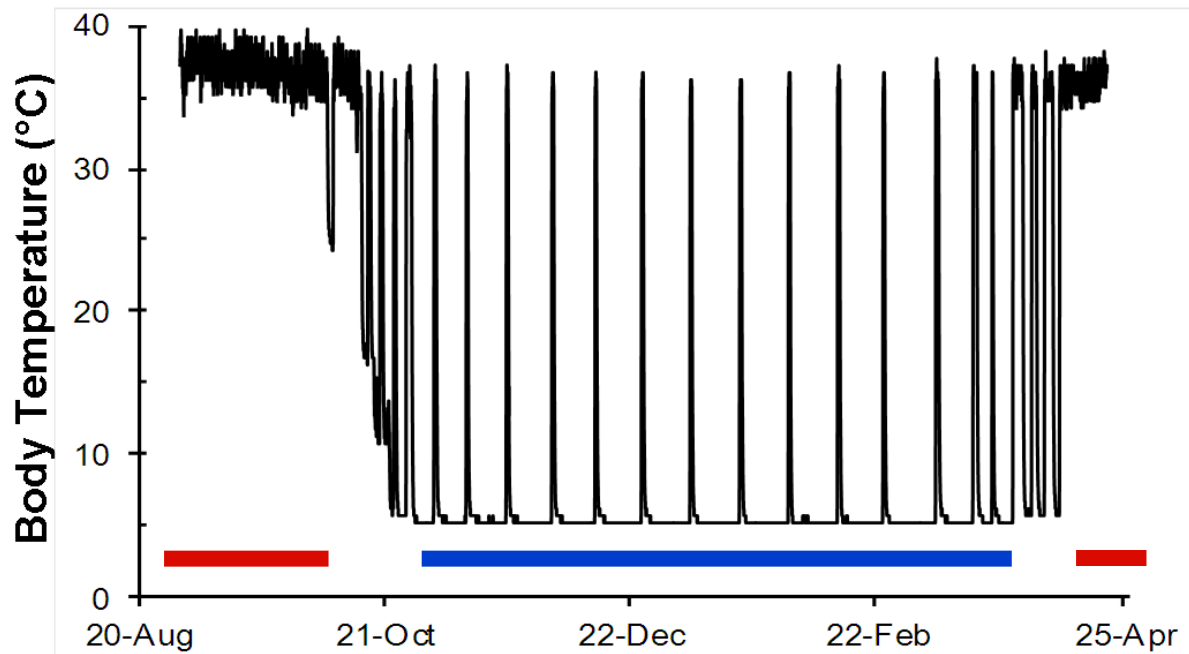
Expertise

- molecular mechanisms of hypoxia tolerance in hibernating and diving mammals
- cardiovascular and blood pressure regulation
- comparative genomics, biomarker discovery and bioinformatics
- cell line resource development for non-model systems

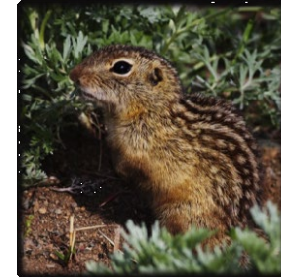
Cardiovascular protection of deep divers



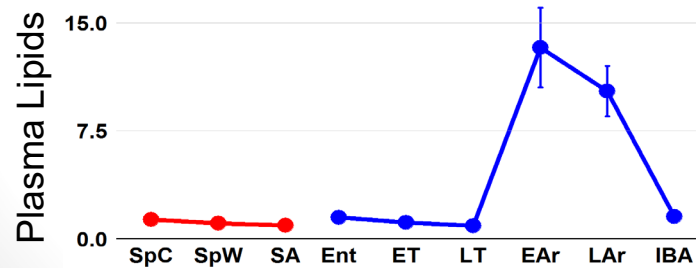
Metabolic control of small hibernators



SUMMER



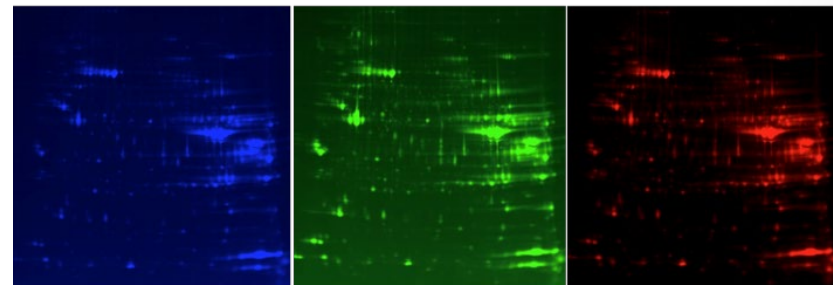
WINTER



REFERENCE

SQUIRREL 1

SQUIRREL 2



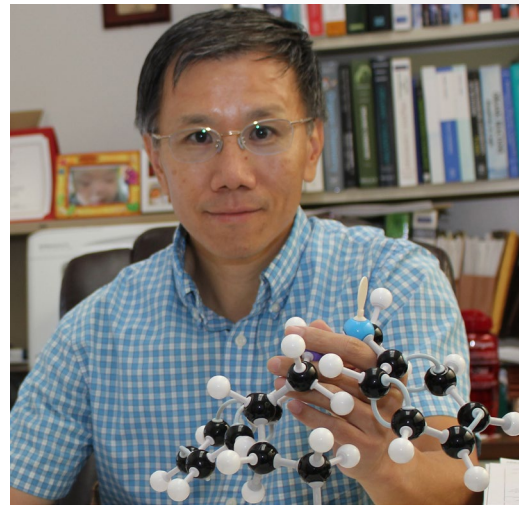
Cy2

Cy3

Cy5

Jun Yong Kang

- Assistant Professor, Department of Chemistry and Biochemistry
- Ph.D., Chemistry, Texas A&M University, College Station, TX
- CHE 217B, junyong.kang@unlv.edu
- http://jkang.faculty.unlv.edu/?page_id=110



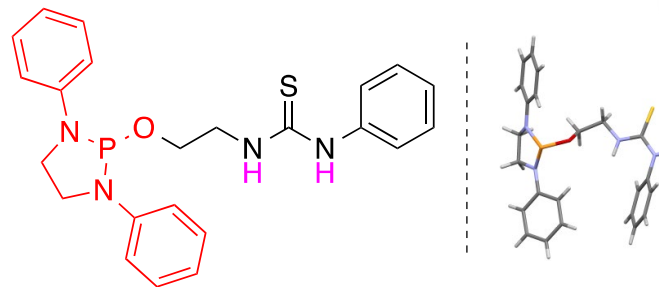
Areas of Expertise

- Synthetic organic chemistry
- Development of new synthetic methodology
- Asymmetric organocatalysis
- Organophosphorus chemistry
- Synthesis of bioactive small molecules

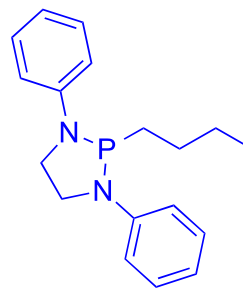
Research Summary:

The development of new synthetic methodologies plays a key role in medicinal chemistry, biochemistry, and materials chemistry. Professor Kang and his group have been developing novel synthetic transformation and new chemical reagents such as commercially available NHP-thiourea and NHP-butane to apply for pharmaceuticals and bioactive molecules.

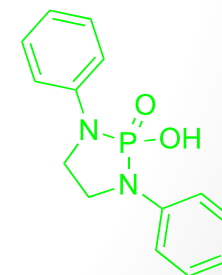
Kang's reagents-commercially available at Kerafast



NHP-thiourea
(phosphonylation reagent)



NHP-butane
(organocatalyst)



NHPA
(organocatalyst)

Ubiquitin-mediated protein degradation

Dr. Gary Kleiger

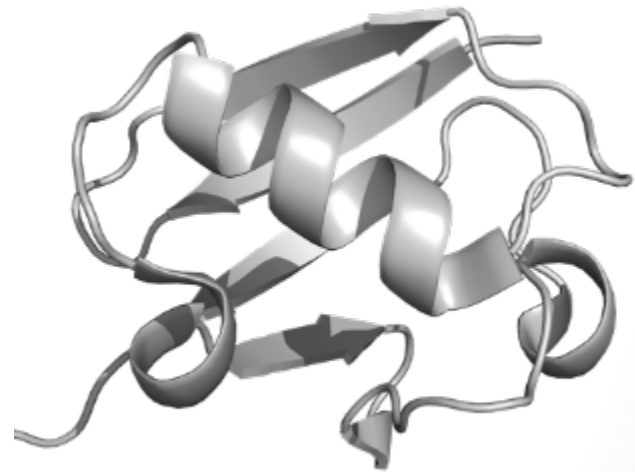
Associate Professor

Department of Chemistry and Biochemistry

gary.kleiger@unlv.edu

Expertise

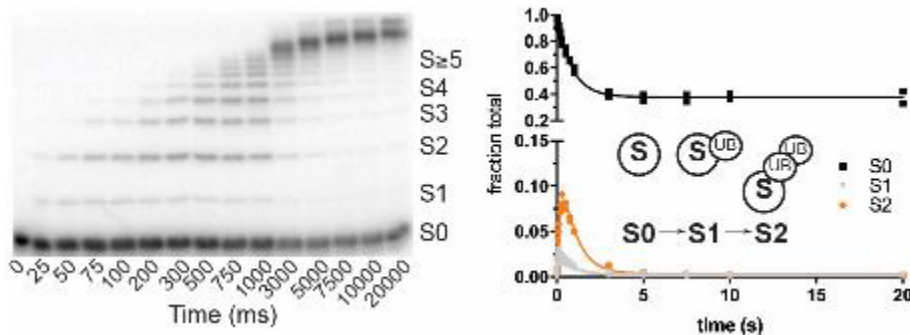
- Structural biology
- Proteomics
- Enzyme kinetics and biophysical assays
- Cell biology



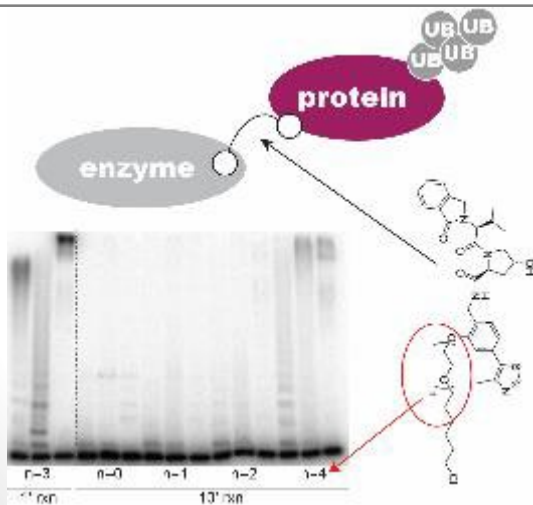
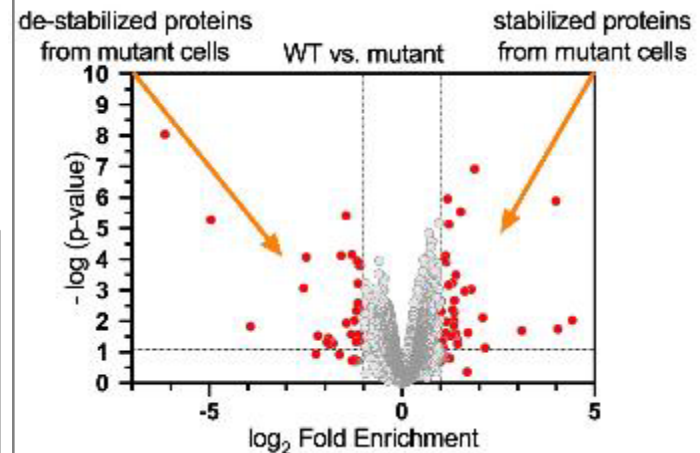
Protein structure of Ubiquitin.

Uncovering how the enzymes that promote protein degradation function in human cells.

Kinetics help us understand how enzymes select protein targets for modification with ubiquitin.



High-resolution mass-spectrometry tells us how mutations in enzymes that lead to human disease affect the stabilities of key human cellular proteins.

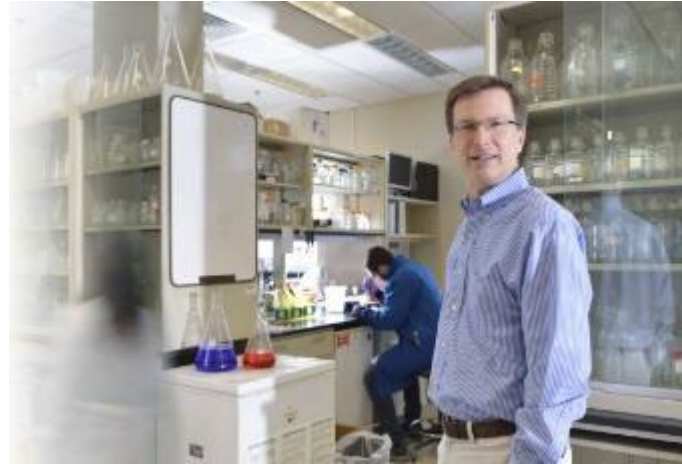


Small molecule inducers of protein degradation can be used to treat human disease. We study the mechanism of how they function both in test tubes and cells.

The Kleiger lab partners with both industry and academic labs to help discover treatments for human diseases such as cancer.



Mass-spec proteome exploration with Dr. Don Kirkpatrick at Genentech Inc.



How to utilize small molecules to induce the degradation of disease-causing proteins with Dr. Craig Crews (Yale and founder of Arvinas Inc.).



Cryo-EM and structural biology with Max Planck Institute of Biochemistry Director Dr. Brenda Schulman.

Novel chemistry and biology using highly ionizing radiation

Michael Pravica, Ph.D.

Professor of Physics

Department of Physics and Astronomy

Phone: (702)895-1723

Email: michael.Pravica@unlv.edu

Expertise:

Useful Hard X-ray photochemistry

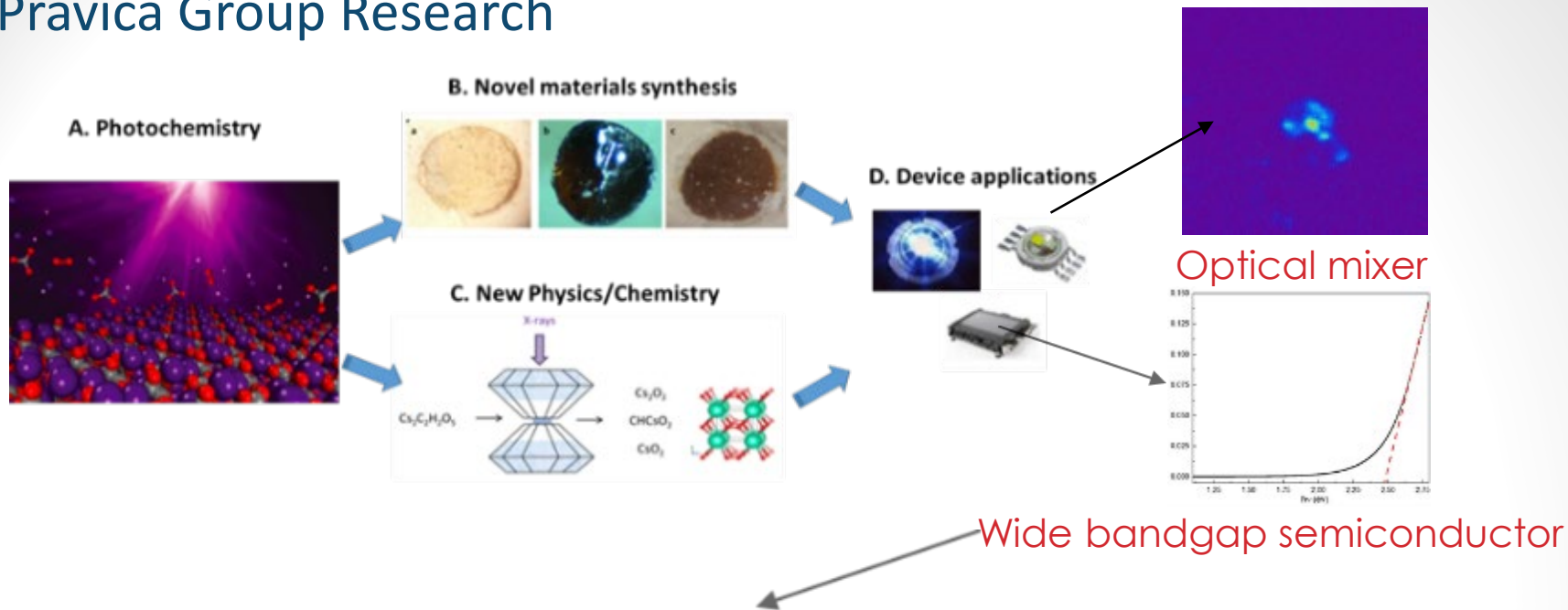
High pressure

Spectroscopy

Ion Beam Nuclear Transmutation Doping

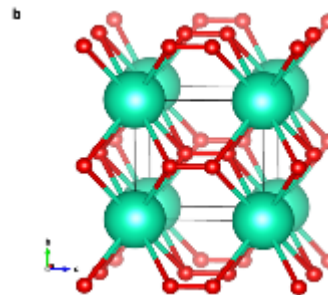
High quality synthesis of vaccines using tuned hard x-rays

Pravica Group Research



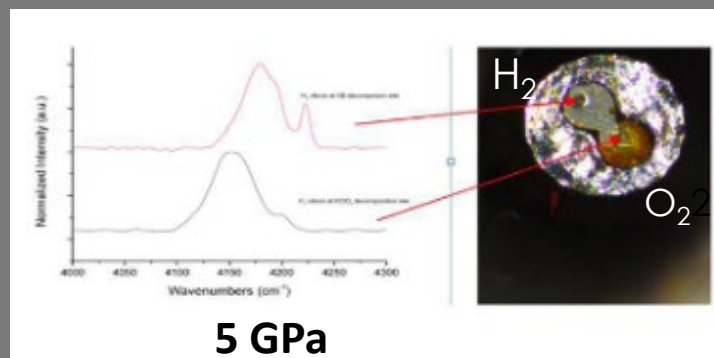
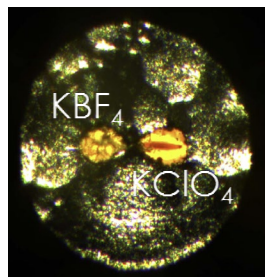
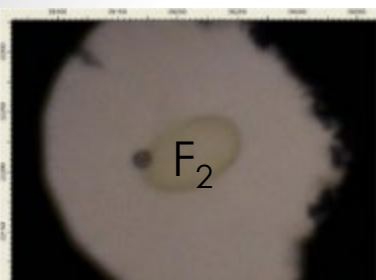
Radiation-hardened sensors/direct energy conversion devices for EXTREME CONDITIONS or tuned solar materials

Useful hard x-ray photochemistry

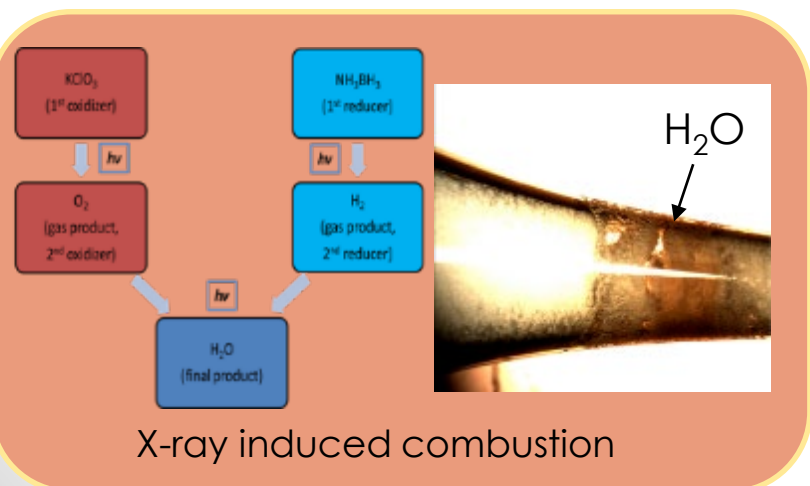


Novel structures of known materials produced With hard x-rays and high pressure (e.g. CsO_2)

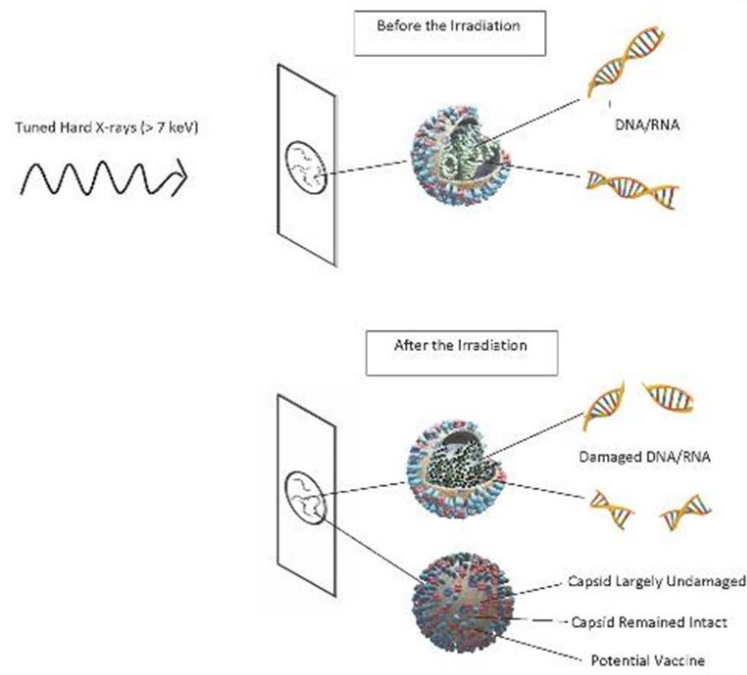
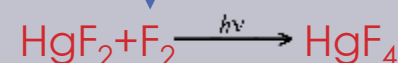
High Pressure Fluorine Chemistry



Molecular mixtures at high pressure



Inner shell chemistry at high pressure



Using tuned hard x-rays to damage viruses to create high quality vaccines by targeting specific molecular groups/bonds that resonantly absorb x-ray energy leading to decomposition chemistry.

Advanced Numerical Methods for Moving Domain/Interface Multi-Physics Problems

Dr. Pengtao Sun

Professor

Department of Mathematical Sciences

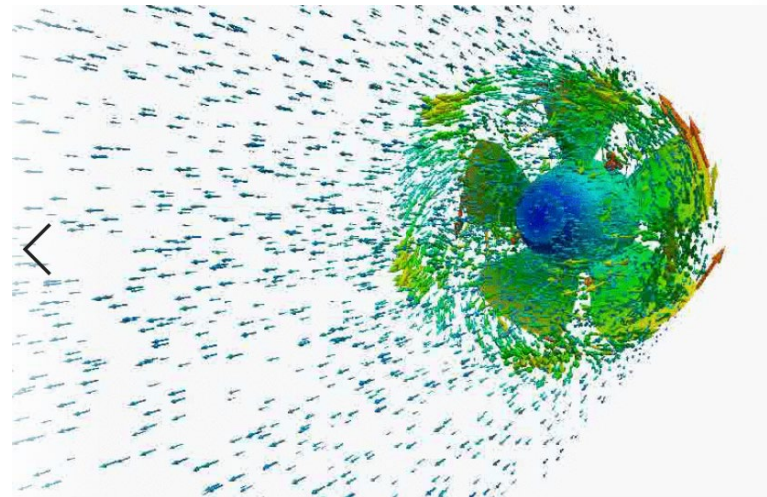
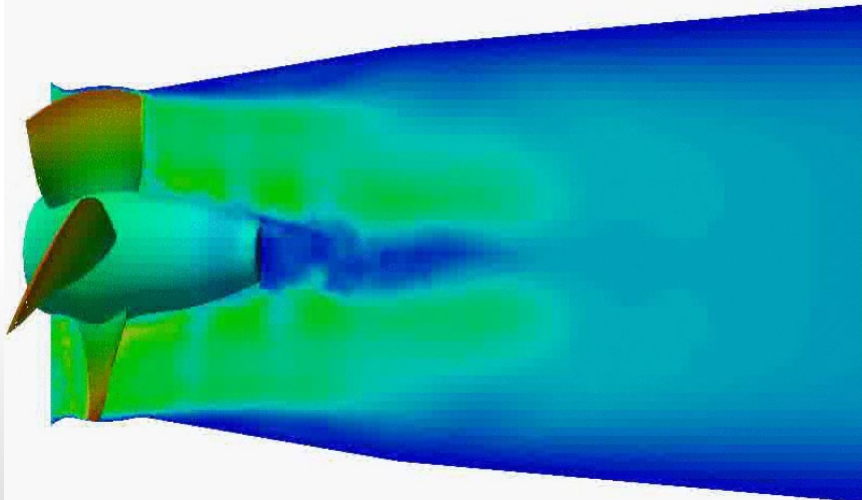
Email: pengtao.sun@unlv.edu ; URL: <https://faculty.unlv.edu/sun/>

Expertise

- Numerical Solutions of Partial Differential Equations (PDE)
- Numerical Analysis (Well-posedness, Stability, Convergence)
- Finite Element/Volume/Difference Methods
- Scientific and Engineering Computing
- Fluid-Structure Interaction (FSI) Modeling and Simulation
- Fuel Cell Dynamics, Fluid Dynamics, Electrohydrodynamics

Fluid-Hydro Turbine Interaction Problems

- Hydroelectric power generating system produces renewable energy and remains crucial for society and industry. The most significant part of this system is the hydro turbine interacting with the water flow, which involves elastic solid materials and viscous fluids and belongs to the category of fluid-structure interaction (FSI). The developments of mathematical models and numerical methodologies are critical in practice for efficient simulations of the hydro turbine, which in turn guides the design and evaluation.
- We approach the challenges in different aspects. First, based on the observation that the hydro turbine, although exhibiting large rotations, has relatively small deformation, we develop linearized elasticity equations that alleviate the burden on nonlinear solver and improves the well-posedness of spatial discretization. Second, we propose a new approach to solve the arbitrary Lagrangian-Eulerian mesh motion for rotating structure. Moreover, we analyzed the well-posedness and convergence of the finite element discretization and demonstrated the discretization is solver friendly.



Hemodynamic Fluid-Structure Interaction (FSI) Problems

- FSI simulation has become the most promising solution method to solve the hemodynamic problem existing in the clinical cardiovascular system. However, the complexity of cardiovascular environment, the artificial heart pump model, the vascular rupture, the aneurysm progression and the aortic dissection cause the deficiency of the existing FSI simulation package towards the clinical demands.
- We devoted our research to the new modeling and numerical techniques for the bloodstream-vascular-stent graft/artificial heart pump interaction problems, aiming at overcoming numerical difficulties and challenges, and developed advanced numerical methodologies to improve the efficiency and accuracy of corresponding FSI simulations. and to deliver more instructive numerical results to medical professionals for helping out patients on an efficient and accurate diagnosis and treatment.

