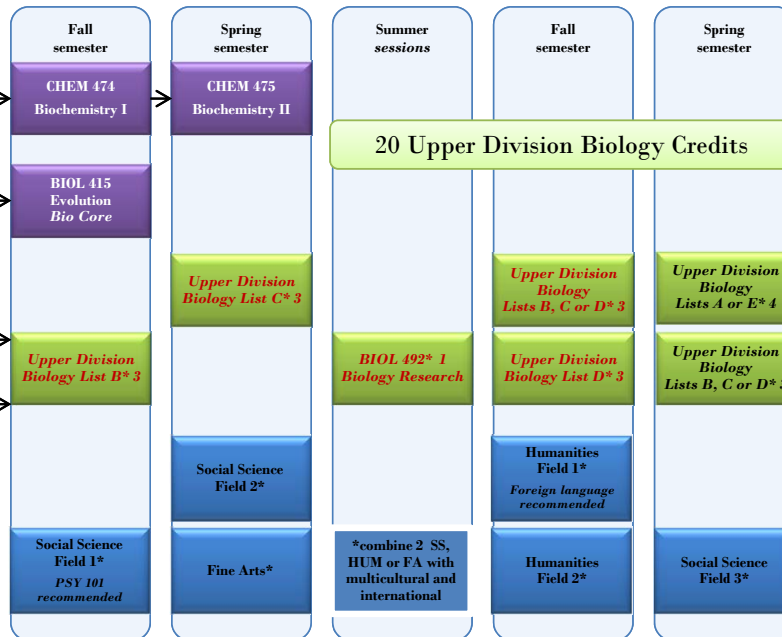
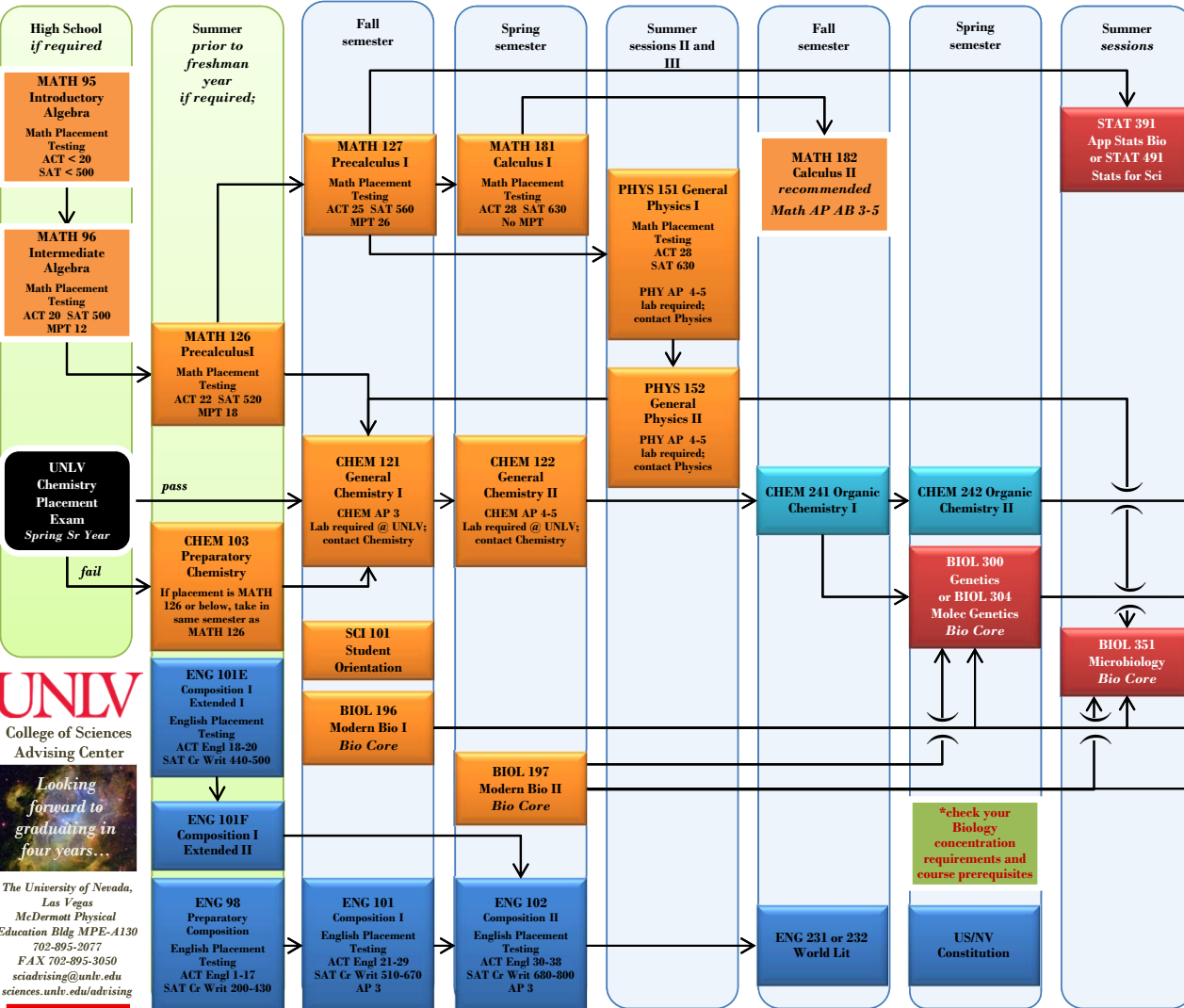


B.S. Biology with a Preprofessional Concentration

- Will you have 124 total credits?
- Will half of your 124 total credits be from a 4-year school?
- Will the last 30 credits of your 124 total credits be from a NSHE school?
- Will your GPA be ≥ 2.0 ?
- Do you have at least a grade of C- in the Biology core classes?
- Will your overall GPA in Biology classes (including the Core) be ≥ 2.0 ?
- Will you fill the Biology upper division list AND credit requirements?
- Will you fill the General Education requirements?



UNLV
College of Sciences
Advising Center

Looking forward to graduating in four years...

The University of Nevada,
Las Vegas
McDermott Physical
Education Bldg. MPE-A130
702-895-2077
FAX 702-895-3050
sciadvising@unlv.edu
sciences.unlv.edu/advising