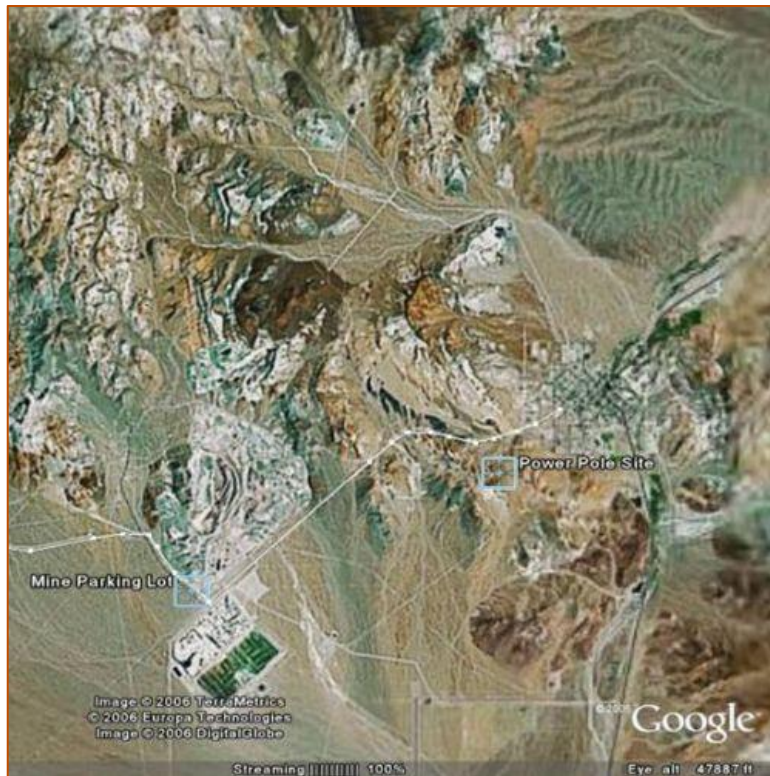


Wind Generation

Nye County, Nevada



The Center for Energy Research monitored two locations in Beatty, Nevada, in search of potential wind generation sites.



Two wind generation test sites in Beatty, Nevada:
the Mine Parking Lot (lower left) and the Power Pole Site (right).

Source: City-Data.com, doi: <http://www.city-data.com/city/Beatty-Nevada.html>

For More Information

Center for Energy Research at UNLV

100 Taylor Hall
University of Las Vegas, Nevada
Box 454027
Las Vegas, NV 89154-4027

Phone: (702) 895-1125
Fax: (702) 895-1123

Director:

Robert F. Boehm, Ph.D., P.E.
Phone: (702) 895-4160
Email: bob.boehm@unlv.edu

Co-Directors:

Yahia Baghzouz, Ph.D., P.E.
Phone: (702) 895-0087
Email: yahia.baghzouz@unlv.edu

Yitung Chen, Ph.D.
Phone: (702) 895-1202
Email: yitung.chen@unlv.edu



The Mine Parking Lot wind-generation test site.