

Here are C major, C Natural / Pure Minor, C Harmonic Minor, and C Melodic Minor. Whole steps are marked with a "w"; half steps are marked with "1/2". In C Harmonic Minor there is an augmented second. It's a second with three half steps.

Major

The image shows the C Major scale in both treble and bass clefs. The treble clef staff starts on middle C (C4) and ascends to C5. The bass clef staff starts on C3 and ascends to C4. Intervals are marked with 'w' for whole steps and '1/2' for half steps. The sequence of intervals is: w, w, 1/2, w, 1/2, w, 1/2, w, 1/2, w, 1/2, w.

Natural / Pure Minor

The image shows the C Natural / Pure Minor scale in both treble and bass clefs. The treble clef staff starts on middle C (C4) and descends to C3. The bass clef staff starts on C3 and descends to C2. Intervals are marked with 'w' for whole steps and '1/2' for half steps. The sequence of intervals is: w, 1/2, w, 1/2, w, 1/2, w, 1/2, w, 1/2, w, 1/2, w.

Harmonic Minor

Musical notation for the Harmonic Minor scale in treble clef. The scale is written in a single line with a treble clef and a key signature of one flat (B-flat). The notes are: C4, D4, E-flat4, F4, G4, A4, B-flat4, C5. The intervals between notes are marked as 1/2 (half note) for C-D, D-E, E-F, F-G, G-A, and A-B. The interval between B-flat and C is marked as an augmented second. The notes are grouped with slurs and 'w' (whole note) labels below them.

Musical notation for the Harmonic Minor scale in bass clef. The scale is written in a single line with a bass clef and a key signature of one flat (B-flat). The notes are: C3, D3, E-flat3, F3, G3, A3, B-flat3, C4. The intervals between notes are marked as 1/2 (half note) for C-D, D-E, E-F, F-G, G-A, and A-B. The interval between B-flat and C is marked as an augmented second. The notes are grouped with slurs and 'w' (whole note) labels below them.

Melodic Minor

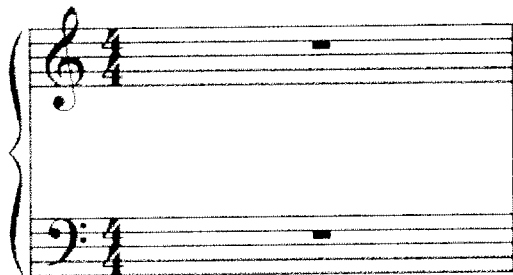
Musical notation for the Melodic Minor scale in treble clef. The scale is written in a single line with a treble clef and a key signature of one flat (B-flat). The notes are: C4, D4, E-flat4, F4, G4, A4, B4, C5. The intervals between notes are marked as 1/2 (half note) for C-D, D-E, E-F, F-G, G-A, and A-B. The interval between B and C is marked as a whole note. The notes are grouped with slurs and 'w' (whole note) labels below them.

Musical notation for the Melodic Minor scale in bass clef. The scale is written in a single line with a bass clef and a key signature of one flat (B-flat). The notes are: C3, D3, E-flat3, F3, G3, A3, B3, C4. The intervals between notes are marked as 1/2 (half note) for C-D, D-E, E-F, F-G, G-A, and A-B. The interval between B and C is marked as a whole note. The notes are grouped with slurs and 'w' (whole note) labels below them.

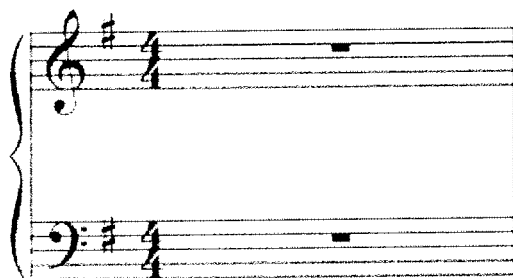
The key signature shows how many sharps and flats are required to maintain the whole step and half step structure of the major and minor scales above, starting on any note:

Notice that the sharps and flats are always placed in a specific location on each staff and are placed in a specific order.

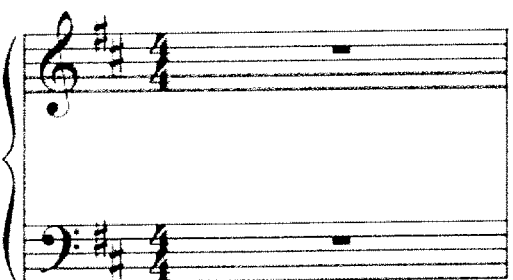
- the key signature of C major and a minor has no sharps or flats



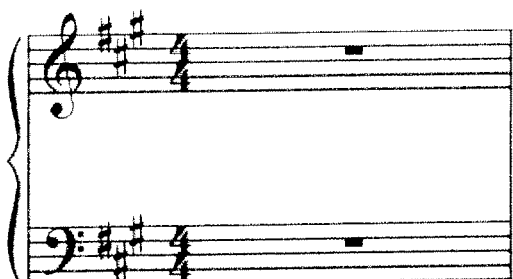
- the key signature of G major and e minor has one sharp (F sharp)



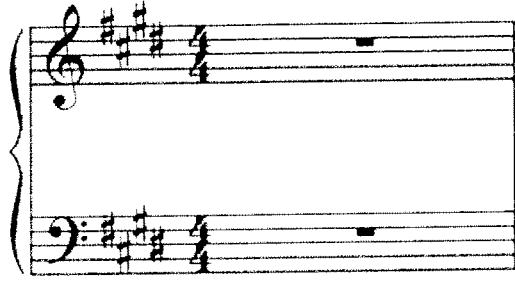
- the key signature of D major and b minor has two sharps (F sharp and C sharp)



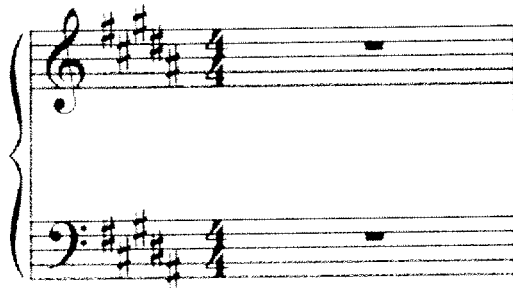
- the key signature of A major and f sharp minor has three sharps (F sharp, C sharp, and G sharp)



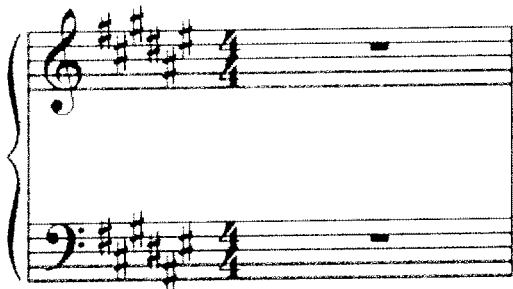
- the key signature of E major and c sharp minor has four sharps (F sharp, C sharp, G sharp, and D sharp)



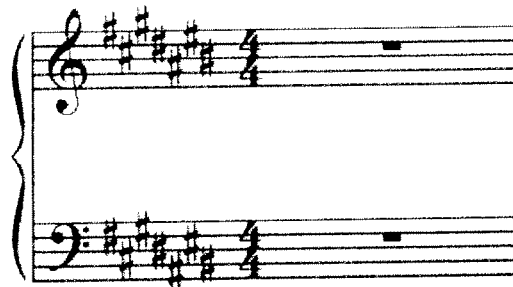
- the key signature of B major and g sharp minor has five sharps (F sharp, C sharp, G sharp, D sharp, and A sharp)



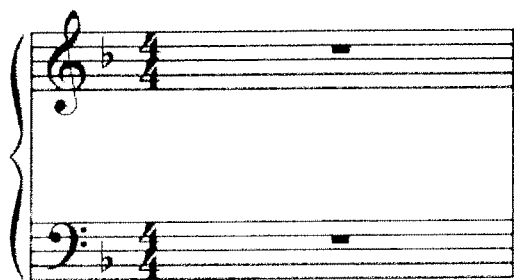
- the key signature of F sharp major and d sharp minor has six sharps (F sharp, C sharp, G sharp, D sharp, A sharp, and E sharp)



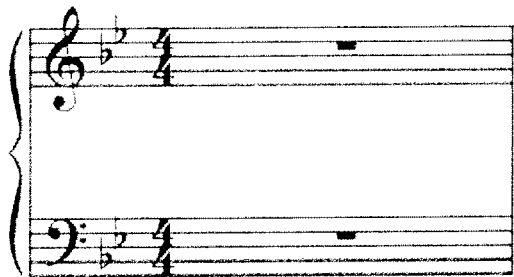
- the key of C sharp major and a sharp minor has seven sharps (F sharp, C sharp, G sharp, D sharp, A sharp, E sharp, and B sharp)



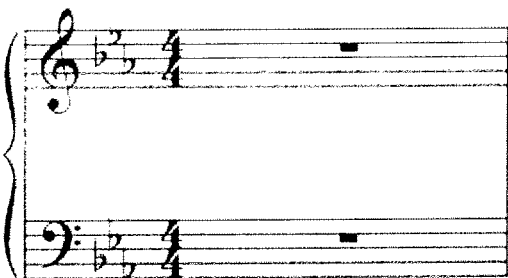
- the key signature of F major and d minor has one flat (B flat)



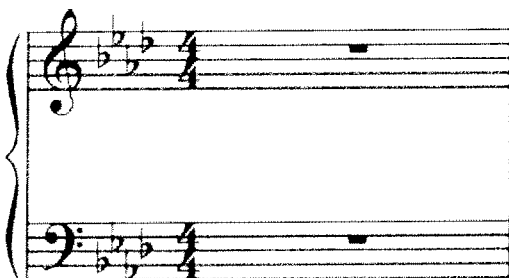
- the key signature of B flat major g minor has two flats (B flat and E flat)



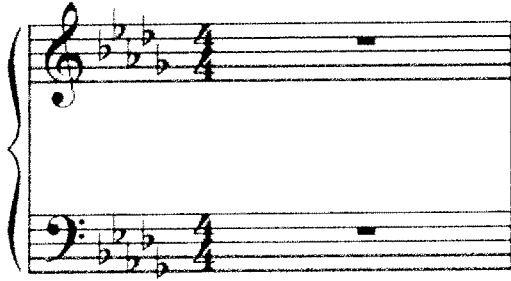
- the key signature of E flat major and c minor has three flats (B flat, E flat, and A flat)



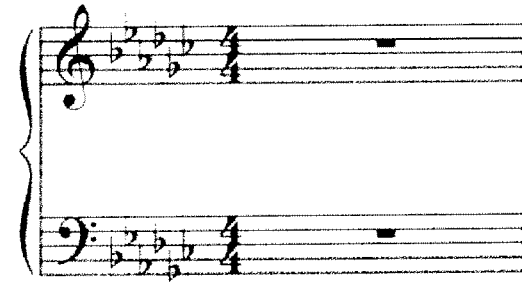
- the key signature of A flat major f minor has four flats (B flat, E flat, A flat, and D flat)



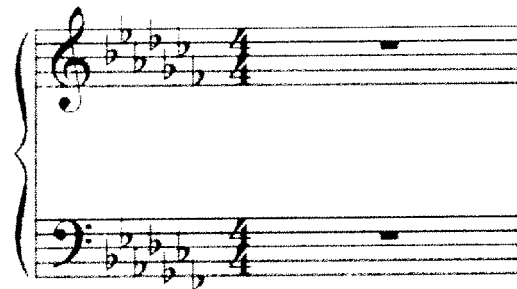
- the key signature of D flat major and b flat minor has five flats (B flat, E flat, A flat, D flat, and G flat)



- the key signature of G flat major and e flat minor has six flats (B flat, E flat, A flat, D flat, G flat and C flat)



- the key of C flat major and a flat minor has seven flats (B flat, E flat, A flat, D flat, G flat, C flat, and F flat)



A musical staff in treble clef showing intervals between notes. The notes are: G4, A4, B4, C5, D5, E5, F5, G5, A5, B5, C6, D6, E6, F6, G6, A6, B6, C7. The intervals between these notes are labeled as follows: minor second, major second, minor third, major third, perfect fourth, perfect fifth, minor sixth, major sixth, minor seventh, and major seventh.

A musical staff in bass clef showing intervals between notes. The notes are: G3, A3, B3, C4, D4, E4, F4, G4, A4, B4, C5, D5, E5, F5, G5, A5, B5, C6. The intervals between these notes are labeled as follows: minor second, major second, minor third, major third, perfect fourth, perfect fifth, minor sixth, major sixth, minor seventh, and major seventh.