

Associate Deans for Research

Friday, June 17, 2016
MEETING MINUTES

In Attendance: Andrew Hardin, Kendall Hartley, Stan Smith, Joe Lombardo, Ruben Garcia, John Brodie, Christina Schmitt, Liz Lewis, Lori Olafson, Tom Piechota, and Jill Zimbelman

1. General Announcements/Updates – Tom Piechota

a. Change in VPRED Staff

- i. Lori Olafson has accepted Associate Vice President for Research role, as Stan Smith goes to the College of Sciences. She will also continue her role as the Executive Director for the Office of Research Integrity.
- ii. Dawn Lantero has accepted the Assistant Director for the Office of Research Integrity role, taking on some of Lori's former duties.
- iii. Sue DiBella will be leaving the division to head up the new UNLV Office of Community Engagement.
- iv. David Hatchett is replacing Brian Hedlund as the new Research Faculty Fellow, as Brian is leaving for sabbatical.

2. Marketing Options for Research Capabilities – David Paul

- a. Moved agenda item to July meeting

3. Revision of Policy for Centers/Institutes – Ruben Garcia/Joe Lombardo

- a. PowerPoint presentation is attached
- b. Council for Centers/Institutes Membership is attached

4. Spotlight on Research – Christina Schmitt/Liz Lewis

- a. Office of Economic Development
- b. PowerPoint presentation is attached detailing their roles in the office
- c. *PLEASE NOTE: Some of the company names in the presentation have been removed to maintain confidentiality.

5. Volunteers for Spotlight on Research – All

- a. July 15, Liam Frink, Office of Undergraduate Research
- b. Aug. 18 – Deb Martin, Anthropology
- c. Sept. 16 – Kendall Hartley, Graduate College

6. Future Agenda Items

- a. FIRs as Primary Investigators – Carl Reiber (July/Aug)

Next Research Council Meeting:

July 15, 2016, 9:00 a.m. - 10:30 a.m., SEB 2251

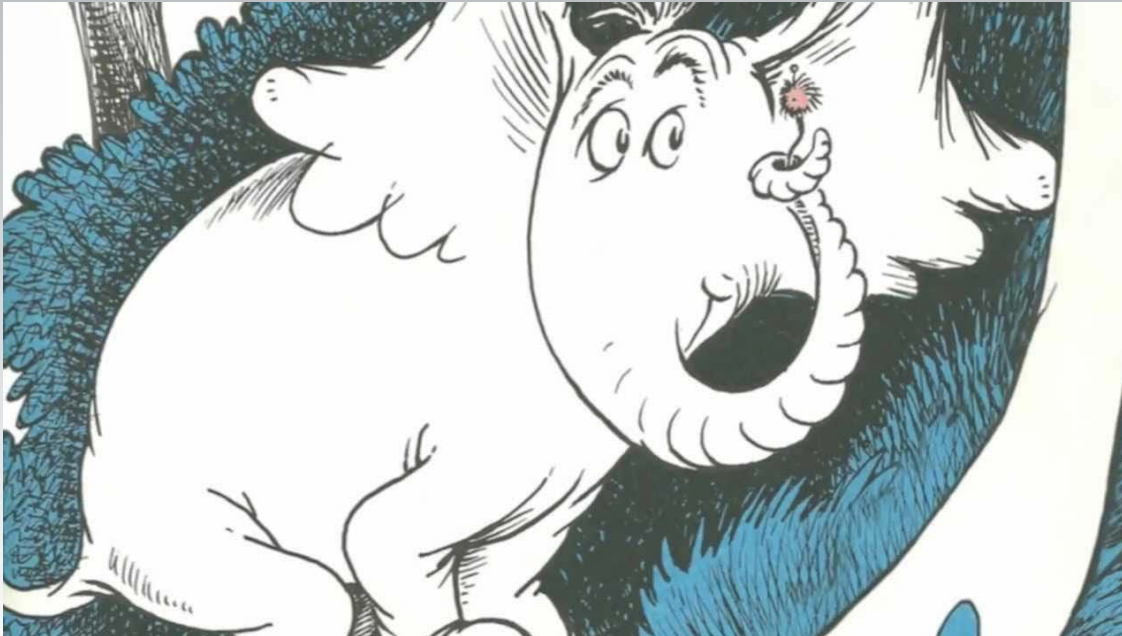


CIML Policy & Procedure

Ruben J. Garcia
Professor of Law
Leadership Development Academy
Fellow

The CIML Elephant

- Review of Centers
- Creation of New Centers
- Best Practices for Centers
- Museums, Labs, and Core Labs




The Council

Research Integrity

- Office of Sponsored Programs
- Economic Development
- Graduate College
- Office of Undergraduate Research
- Faculty Awards
- Councils & Committees
- Centers, Labs, Institutes & Museums
- ▼ Forms
- Policies
- Contact

UNLV Council For Centers, Institutes, Museums & Labs

The Council serves as an oversight advisory body to the Vice President for Research and to the Executive Vice President and Provost. The Council is available to provide ongoing assistance both before and after the formal approval of a center, institute, museum, or laboratory. Council members are directors of active centers and are appointed by the Vice President for Research and Economic Development.



Council Charge

The Council is responsible for initial review and recommendation of proposals for new centers, institutes, museums, and laboratories as well as for conducting annual reviews of existing units. These units are primarily directed toward basic/applied research, client or public service, policy studies and reports, or serve as an archive/repository.

Recommendations from the Council are forwarded to the Vice President for Research. The Vice President for Research, in turn, makes a recommendation to the Executive Vice President and Provost. Requests for new centers, institutes, museums and laboratories are then forwarded for processing through the Chancellor's Office and the Nevada System of Higher Education Board of Regents. After a new center, institute, museum or laboratory is approved by the Board of Regents, the day-to-day operational administration and oversight typically is managed through an academic department, school, or college.

- [Council Membership](#)
- [List of Active UNLV Centers](#)
- [UNLV Policy on Centers, Institutes, Museums & Labs](#)

Forms

Review Process

- Reviews and Rates Centers as Achieving, Highly Achieving, Underachieving, Inactive
- This determines how often Centers report.
- These are the grades that are sometimes hard to give.
- Discussion about changing the grading scales to “1 year” or “2 year.” But this seems not to adequately serve the feedback function.

Goals

- Reducing Burdens
- More Regular Information
- Measuring Output of Centers
- Measuring Service of Centers
- Linking Centers to Community

Recommendations

- Streamline Annual Report Process
- Have a Short Form and a Long Form
- Link to Digital Measures
- Checking Function
- Getting Away From Rankings
- Providing Timely Feedback
- Closer Review of Centers at Regular Intervals

Centers & Institutes as Component of Top Tier Path

Academic Health Center

Research, Scholarship and Creative Activity



Community Partnerships

Student Involvement

Infrastructure and Shared Governance

Policy

- Centers and Institutes Policy Dates to 2008
- Calls for New Centers
- Potential Revision of Policy:
- “University Research and Innovation” (URI)
Centers or Institutes are multi-college, multi-disciplinary units that address issues of major significance to state, national and international priorities and needs. URI Centers or Institutes will have charters that outline specific objectives and deliverables that align with the long-term, highest priority top-tier goals for the University.

Changes to meet Policy Goals

- Adds a category of University Institutes, that align with the university's Top Tier goals based in the VPRED office;
- Streamlines and regularizes reporting to the Council & VPRED in an online system that is an annual short form, or each three years for a more detailed report; and
- Requests information from Units about their research review practices and their practices to clarify the relationships between UNLV's institutional role and their research output.

University Institutes

- University Institute: University Institutes are multi-college, multi-disciplinary units that address issues of major significance to state, national, and international priorities and needs. University institutes will have charters that outline specific objectives and deliverables that align with the long-term highest priority top-tier goals for the University. University Institutes are based in the VPRED office.

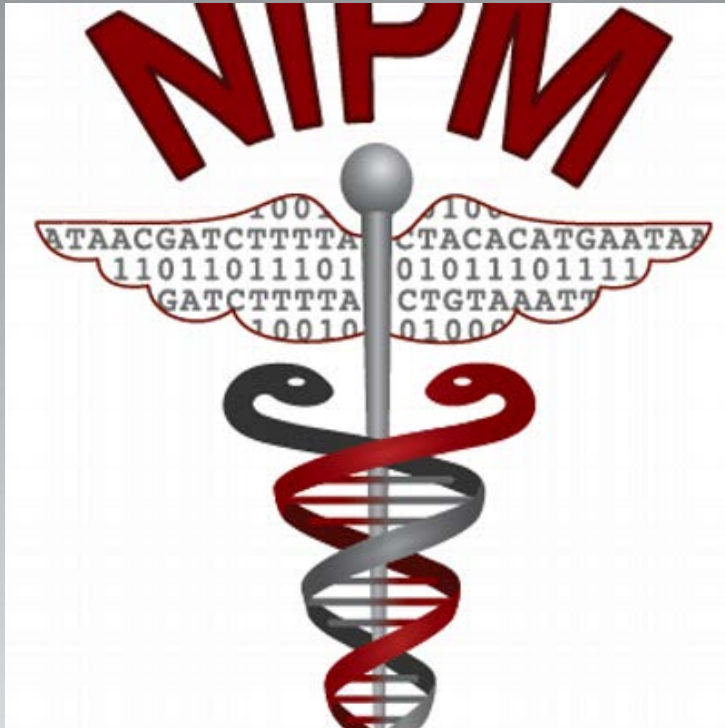
Data Collection

- In the Annual Review, research centers, institutes and university institutes should have a broad impact locally and throughout the research community. In order to assure that UNLV is associated with a high level of quality output as part of the Top Tier mission, research units should endeavor to maintain best practices with regard to review of research output. Units should document their practices for internal and external review of research and be prepared to report those practices annually to the Council and VPRED.

Best Practices and Role Clarification

- Research output that bears the name of a center or UNLV in the title should be subject to a review process that is typical of the research output in the discipline in which the work is done. Where possible, the review process of the research output should be explained in the document or in an appendix. The Unit's relationship to UNLV should be apparent on the face of the research output.
- When appropriate, research output by centers, institutes, and university institutes should make clear that the particular output does not represent the view of the University.

Examples of University Level Centers



And more down the road....



Form Revisions

2016 Annual Report Form [Compatibility Mode]

Home Insert Design Layout References Mailings Review View

ABC Spelling & Grammar Smart Lookup Thesaurus Word Count Language New Comment Delete Done Previous Next Track Changes No Markup Markup Options Reviewing Accept Reject Compare Block Authors Protect Document Restrict Permission

**Annual Report Form
Calendar Year 2016
UNLV Approved Research & Service Units**

DIRECTIONS: Please provide the following information about your research or service unit for the period January 1-December 31, 2016. **The deadline for submission is Friday, January 15, 2017.** The purpose of this report is to provide the University with a snapshot of the unit's activities, deliverables, and financial well-being.

If a particular question is not applicable to your unit or if an answer is No, please explain the reason for the "N/A" or "No" response in the appropriate box.

Unit Name:	
Current Director:	
Has Director Changed Since last year?	<input type="checkbox"/> Yes (list former director's name) _____ <input type="checkbox"/> No
Director's Phone Number:	
Director's E-Mail:	
Website URL: (If no website, explain why)	
Unit Administratively Reports To:	Name: _____ Title: _____
Principal Function(s) of this Unit: (If you select more than one category, indicate percentage of effort for each)	<input type="checkbox"/> Basic/Applied Research <input type="checkbox"/> Archive/Repository INCLUDE % OF EFFORT <input type="checkbox"/> Dept. Laboratory <input type="checkbox"/> Client Services / Public Service / Local Contracts <input type="checkbox"/> Policy Studies & Reports
Website	<input type="checkbox"/> UNLV Web Communications

Page 1 of 3 583 Words English (US) 100%

Useful Information

- 1. Basic Information
- 2. Budget
- 3. Space
- 4. Personnel (Poss. Link to Digital Measures)
- 5. Research Activity (Poss. Link to DM)
- 6. Community Involvement (Poss. Link to DM)
- 7. Work with other Centers, Departments

The Form

2016 Annual Report Form [Compatibility Mode]

Home Insert Design Layout References Mailings Review View

Print Layout Web Layout Draft Outline Ruler Gridlines Navigation Pane Zoom Zoom to 100% Multiple Pages Page Width New Window Arrange All Split Switch Windows Macros

Annual Report Form
Calendar Year 2016
UNLV Approved Research & Service Units

DIRECTIONS: Please provide the following information about your research or service unit for the period January 1-December 31, 2016. **The deadline for submission is Friday, January 15, 2017.** The purpose of this report is to provide the University with a snapshot of the unit's activities, deliverables, and financial well-being.

If a particular question is not applicable to your unit or if an answer is No, please explain the reason for the "N/A" or "No" response in the appropriate box.

Unit Name:	
Current Director:	
Has Director	Yes (<i>list former director's name</i>)

Page 1 of 3 583 Words English (US) 190%

Ongoing Issues, Next Steps

- Space
- Funding
- Separate Accounts
- Centers of One
- External Review
 - =Developing Policy Document!

Questions? Comments?



Thank you!



**UNLV COUNCIL FOR CENTERS, INSTITUTES,
MUSEUMS, AND LABORATORIES
2016 - 2017 MEMBERSHIP**

Chair: Joseph Lombardo

National Supercomputing Institute
Office: 702-895-4153
Mail Stop: 4028
lombardo@nscee.edu

Bo Bernhard

William F. Harrah College of Hotel
Administration
International Gaming Institute
bo.bernhard@unlv.edu

Ken Hanlon

College of Fine Arts
Department of Music
Arnold Shaw Center for
Popular Music
kenneth.hanlon@unlv.edu

Monica Lounsbery (rotates out 7/1/16)

School of Medicine
Associate Dean for Faculty Affairs
monica.lounsbery@unlv.edu

Barbara Luke

College of Engineering
Department of Civil &
Environmental Engineering & Const.
Applied Geophysics Center
barbara.luke@unlv.edu

Neil Opfer

Faculty Senate
Department of Civil &
Environmental Engineering & Const.
neil.opfer@unlv.edu

Tara Phebus

School of Community Health Sciences
Nevada Institute for Children's Research
and Policy
tara.phebus@unlv.edu

Greg Schraw

College of Education
Department of Educational Psychology &
Higher Education
Center for Research, Evaluation
and Assessment
gregory.schraw@unlv.edu

Ex-officio:

Carl Reiber

Office of the Executive Vice President
and Provost
Interim Senior Vice Provost
Carl.Reiber@unlv.edu

Ginger Tanenhaus

Assistant to Joseph Lombardo
National Supercomputing Institute
Office: 702-895-4153
Fax: 702-895-4156
Mail Stop: 4028
ginger.tanenhaus@unlv.edu

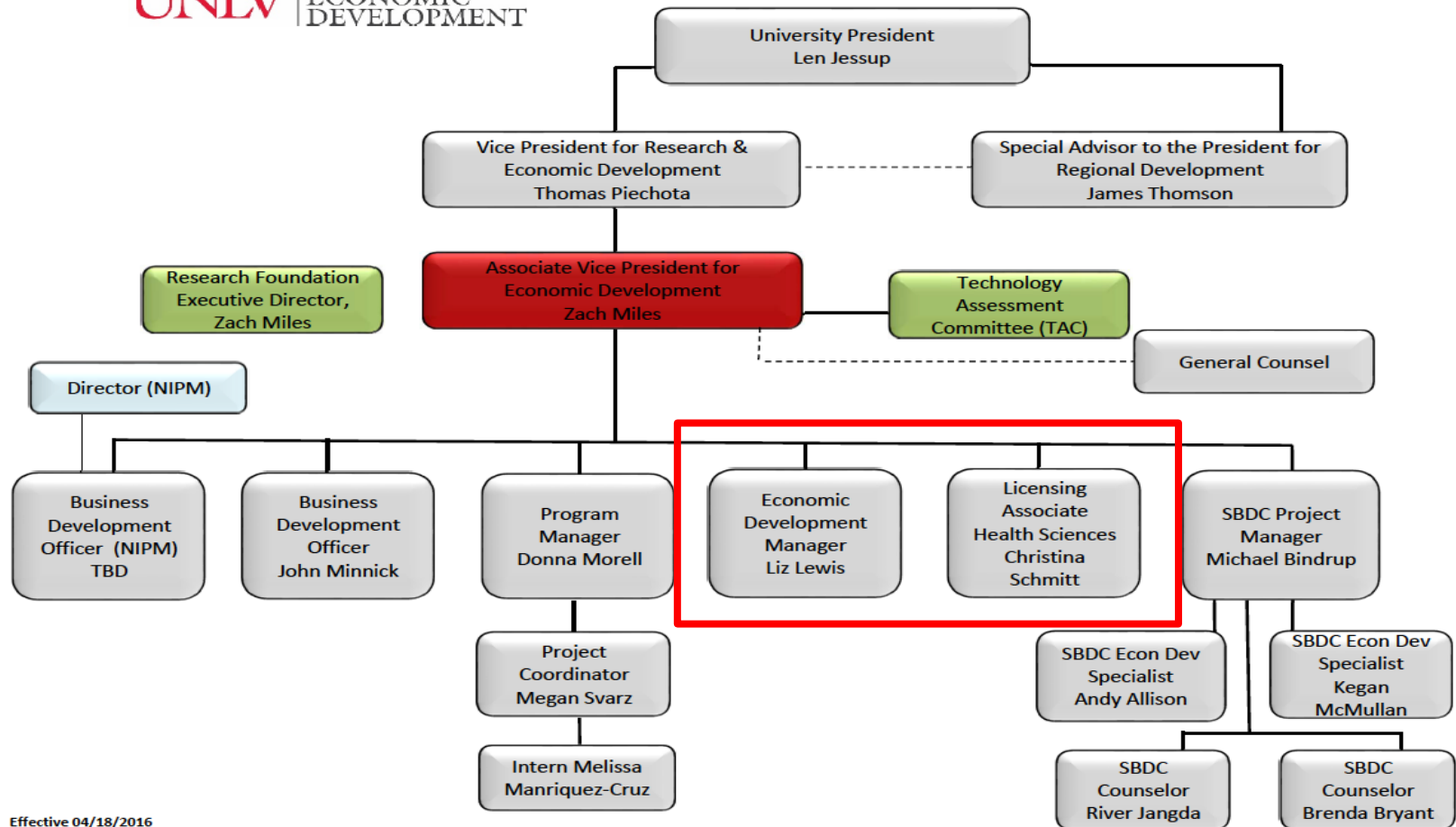


Office of Economic Development

Associate Deans for Research

June 17, 2016

Office of Economic Development



Effective 04/18/2016

Christina Schmitt

Education:

- B.S. in Biological Sciences
 - Purdue University
 - West Lafayette, Indiana
- Ph.D. in Integrative Molecular and Biomedical Sciences
 - Baylor College of Medicine
 - Houston, Texas

Experience:

- Thesis involved cancer research using a molecular biology/protein chemistry approach.
- Intern in technology transfer office at Baylor College of Medicine.

The role of a licensing associate...

- Meet with faculty members to discuss potential inventions
- Evaluate inventions, seek patent protection, analyze commercial market, find commercial partners
- Assist with agreements (NDAs, MOUs, outgoing MTAs, IIAs, license agreements)

Current License Agreement



- Multi-disciplinary group of professors – Nursing, Mechanical Engineering, and Electrical Computer Engineering
- Wearable device for monitoring caloric intake, along with monitoring exercise and sleep.
- Negotiated a license agreement (currently out for signatures) that allows entrepreneurs to create a start-up company.
 - Researchers will receive funding to continue their research and work side-by-side with this start-up company

Current Corporate Sponsored Research Agreement



- Life Science professor was contacted by an industrial biotechnology company about a possible collaboration.
- We helped to negotiate intellectual property terms for the work done as part of a collaborative project.
- Agreement would give funding for researcher to hire a student and perform experiments specifically for the company.

Liz Lewis

Education:

- B.S. in Business Management
 - UNLV



- MBA – New Venture Creation Concentration
 - UNLV

Experience:

- UNLV's Center for Entrepreneurship – Angel Investing Certificate
- The Desert Companies – Construction and building materials

The role of economic development manager....

- Outward focus of identifying partnership opportunities with companies, specifically in research
- Work with other economic development groups to foster relationships and identify opportunities
- Assist with agreements (NDAs, MOUs, CSRs)

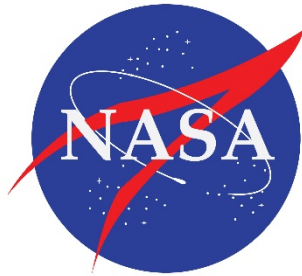
Examples of Past Agreements



- Tesla
 - Research agreement focusing on water recycling/treatment and battery research



- Water Start
 - Master agreement in place for ongoing partnership and joint projects



- NASA Mentor-Protégé Program
 - Allows engineering students to participate in developing multi-media training for Payload Developers

Potential Corporate Sponsored Research Agreements

- Window tinting company
 - Collaborating with Nevada Center of Industry Excellence to identify new material/compound in window tinting process
- Local company specializing in eco-friendly absorption materials
 - Creating a textile form of their product and general analysis
- Aerospace & defense company
 - Working with engineering students on space projects
- Supercomputer projects
 - Specifically in hospitality industry