

The Luminary

A Newsletter for UNLV Graduate & Professional Students

February 2014



Welcome to a New Semester

by Sharon Young, GPSA President

Volume 8 Issue 3

Inside this issue:

Welcome Message	1
Campus Locations for Lactation Stations	2
Campus Resources	2
GPSA Executive Board Elections 2014—2015	3
GPSA Vice President Vacancy	3
Campus Brita Stations	4
GPSA Book Scholarships	4
<i>The New York Times</i> available in Commons and Online	4
Graduate College Workshops	4
GPSA Professional Development Workshops	5
Graduation Deadlines	5
GPSA Resolution no. 8—Endorsement of UNLV Medical School	6
UNLV Cares Food Pantry	6
GPSA Sponsorship Funding	7
Graduate & Professional Student Research Forum 2014	7
Lied Library Enhancement	7
UNLV Calendar of Events	8
GPSA February Mixer	8
GPSA Calendar of Events - Insert	

First, I would like to thank outgoing Graduate and Professional Student Association (GPSA) President Michael Gordon for his dedication to graduate students over the past five years. Michael graduated this past Fall semester with a PhD in Public Affairs. During his time as a student, he tirelessly served the GPSA as a representative on the council, GPSA treasurer, and most recently as GPSA President for the past 2 1/2 years. Michael will certainly be missed and his numerous contributions in support of graduate and professional students are greatly appreciated.

With the Spring semester beginning, I send you the best wishes for a productive and enjoyable semester. The UNLV community has seen dramatic changes this past year, from President Smatresk's departure to begin his presidency at University of North Texas, to the Board of Regents' approval of the proposed medical school. As UNLV embraces these changes and evolves into a premier research institution, graduate and professional students play an important role in this transition. We fill a variety of roles on campus, from student, to researcher, to teacher, and our work in these areas will not only to prepare us as academics and professionals, but it also provides support that allows faculty to dedicate more of their time to scholarly work. For all we do in the lab, library, and classroom, we deserve a dedicated advocate who represents the best interests of graduate and professional students. The GPSA is that advocate.

In addition to advocacy, the GPSA provides support and benefits exclusively for graduate and professional students. The GPSA offers research and travel funding, hosts monthly social activities, holds an annual research symposium, and maintains the Graduate Student Commons, a study area/computer lab on the second floor of Lied Library. A primary goal of the GPSA is to maintain a sense of community among graduate and professional students through providing these support systems. Please take advantage of these opportunities and commit to strengthening our campus community.

We are all responsible for ensuring that our campus is an active and supportive community, so please get involved in one way or another, whether it is attending one of the numerous lecture series' on campus, cheering for the Rebels at an athletic event, or volunteering at the UNLV Cares Food Pantry. As you will see throughout this newsletter, there are numerous activities and resources available to enrich your academic experience.

For more information on any of the GPSA's programs, or to become involved, please drop by the Commons, read *The Luminary*, our quarterly newsletter, and stay up on the latest news by perusing the electronic messages the GPSA sends out throughout the semester to your RebelMail account.

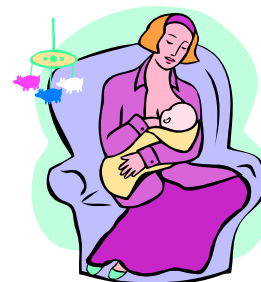
On behalf of myself, Secretary Meghan Pierce and Treasurer Eshani Gandhi we wish you a productive semester and hope to see you in the Commons or at one of the GPSA hosted events!



Graduate Student Commons located

Lactation Rooms Available Throughout Campus

The Jean Nidetch Women's Center now has 6 lactation rooms for faculty, staff, and students to pump or breast feed in a private, clean, and quiet space. The Center provides a rocking chair and a refrigerator for daily storage (in select rooms only.) In the JNWC Lactation Room is a Medela Lactina Electric Plus Pump for you to use with your own attachments.



- Jean Nidetch Women's Center SSC-A - Room 255
- Student Union - Room 316 (Ask the front desk for the Lactation Room key)
- CEB (Carlson Education Building) - 3rd floor, across from work room 321
- UNLV/CSUN Preschool
- Boyd School of Law - Second Floor BSL210. Please visit BSL211 for access to the room.
- Lied Library - Please contact Libraries Security (702-895-2228 or 702-379-1561) or any Lied Library service point at least 30 minutes before space is needed.

All lactation rooms are available Monday-Friday 8am-5pm; except the Library location. Contact: Ashlyn Gray
ashlyn.gray@unlv.edu / 702-895-4475

This information was retrieved from: <http://www.unlv.edu/srwc/womens-services/lactation-services>

Getting the most out of Campus Resources

- * The Writing Center is located in the Central Desert Complex (CDC), Building 3, room 301, 702-895-3908. The Center provides assistance to any student, from first-year students to graduate students working on their theses or dissertation. If you are a graduate assistant and would like a Writing Center consultant to come to your class to briefly discuss their services and provide informational material (such as brochures and bookmarks) for your students, you may either call or email the Assistant Director, Jacquie Elkouz, jacquie.elkouz@unlv.edu, with the time, location, number of students, contact information and the desired date of the presentation.



- * Student Wellness and Recreation Center is a state-of-the-art facility providing a wide variety of exercise equipment and classes, dissertation & thesis student support groups, workshops and much more. All of these opportunities are conducive to your physical and mental well being and educational success. **Check the [Rebel X class roster for classes and times](#).** More information is available at: <http://hrwc.unlv.edu/>.



- * Career Services provides: career counseling; resume critiquing; in-office resources including job search computer lab and library; employer events including UNLV Career Day held during the spring and fall semesters and mock interviewing. In addition, the online job search and recruiting system, UNLV CareerLink, is available to you for 3 months after graduation, after which you can get a new account when you join the UNLV Alumni Association, 702-895-3621. Contact Career Services at 702-895-3495, located in Student Services Complex (SSC), Bldg. A.



- * The new UNLV Transit Center is located near the Greenspun Hall Building, right behind the In-and-Out Burger, the 6,460 square foot Center opened fall 2013. Students, faculty and staff can purchase ***significantly*** discounted passes on all Regional Transportation Routes (RTC) in the Student Union. The Transit Center is part of UNLV's master plan and is a multi-modal facility. It supports facilities, services and connectivity for public transit, pedestrians and bicyclists.



Get Involved in Student Government— 2014—2015 GPSA Executive Board Elections

The GPSA is the governing body for all enrolled graduate and professional students at UNLV. The Association represents the graduate and professional student body at Board of Regents meetings, campus-wide committees, offers fall, spring, and summer research/ conference travel funding, and maintains an office and computer lab in the Lied Library. The GPSA assists graduate and professional students with support for their academic endeavors. Providing an environment conducive to student scholarship and research is the primary goal of the GPSA. In addition, the GPSA strives to engender a sense of community among the graduate and professional students by furnishing financial support and fellowship.

The GPSA Council is made up of one representative from each Graduate College department and professional program, and meets the first of each month during the semesters. Meetings are open to all graduate and professional students. The Executive Board meets routinely, and consists of four elected positions: **President, Vice President, Secretary and Treasurer.**

The Declaration of Candidacy application (available online: <http://www.unlv.edu/gpsa>) and letter of recommendation are due in the GPSA Office by **Friday, April 4, 2014**. Each candidate will be expected to make a speech to the GPSA Council on **Monday, April 7, 2014 at 2 p.m.** in the Student Union, room 208 A & B, where the Council members will then cast their ballots. All other graduate and professional students will have the opportunity to vote at the Graduate Student Commons, Lied Library room 2141; beginning 4:00pm Monday, April 7th. Students will be allowed to vote during regular GPSA Office hours and must show their valid student ID; only one vote per graduate/professional student. Voting will conclude **Friday, April 11, 2014 at 5 p.m.**

The voting results will be announced and posted by **Monday, April 14, 2014**. If you have any questions, please contact the GPSA Office, at 895-2261.

**GRADUATE & PROFESSIONAL
STUDENT ASSOCIATION
EXECUTIVE BOARD 2014-2015 ELECTIONS**

PRESIDENT, VICE PRESIDENT,
SECRETARY AND TREASURER

 **Applications:** available in the Graduate Student Commons
Lied Library room 2141 and the GPSA website:
<http://www.unlv.edu/news-story/gpsa-e-board-elections-2013-2014>

Deadline for submission: Friday, April 4, 2014

Candidate Speeches: 2 p.m. Monday, April 7, 2014
in the Student Union room 208 B & C

Voting: April 7—April 11, 2014 in the
Graduate Student Commons, Lied Library room 2141
Beginning 4:00 p.m. Monday, April 7, 2014
Concluding 5:00 p.m. Friday, April 11, 2014 

Get Involved—Vacancy GPSA Vice President Position

This spring semester the Graduate & Professional Student Association (GPSA) has an e-board vacancy for the office of vice president.

The Declaration of Candidacy application and faculty letter of recommendation is available at: <http://www.unlv.edu/gpsa>. The application deadline is **Friday, February 28, 2014** and should be submitted to the Graduate Student Commons, LLB 2141. Applicant's resumes / CVs are encouraged, but not required, to be included in the applicant's application packet. Executive board vacancies are made by an appointment by the GPSA executive board utilizing an interview process which includes the GPSA advisors and manager. Following the application deadline date, candidates will be notified to schedule an interview. Any questions please call 702-895-2261.

**THE GRADUATE & PROFESSIONAL
STUDENT ASSOCIATION
HAS AN OPENING ON THE
GPSA SPRING 2014 EXECUTIVE
BOARD FOR THE
OFFICE OF: *Vice President***

The application and more information is available online:
<http://gpsa.unlv.edu/>
Application deadline is
February 28, 2014.

Brita Stations Located Throughout Campus



Did you know that the GPSA sponsors a Brita station on campus? Drop by the second floor of the library to check it out! It is located directly across from the Graduate Student Commons.

You can find more Brita stations throughout campus at the following locations: WRI, BEH, HFA, Student Union, CBC C, SRWC, CEB, BSL, LAC, ARC, CSB, SLC, and in the Cottage Grove Parking Structure. For a more detailed map of the Brita locations go <http://facilities.unlv.edu/recycling/HydrationStations.html>



Graduate student, Meghan Pierce, quenches her thirst at a Brita Station

GPSA Book Scholarships

The GPSA has set up a book scholarship program. It is designed to offer financial assistance to undergraduate and professional students purchasing textbooks for the upcoming semester. Ten (10) scholarships are awarded each Fall and Spring semester in the amount of \$100.00 each.

Eligibility: To qualify for the GPSA Book Scholarship students must be admitted and enrolled full-time (9 credits or 6 credits with a graduate assistantship). Students must also have and maintain a minimum 3.0 GPA, be in good academic standing and have completed at least six (6) graduate credit hours at UNLV. **Students are permitted to receive no more than one GPSA Book Scholarship for the duration of their UNLV academic career.** The application is available at: <http://gpsa.unlv.edu/grant.htm> Incomplete or late applications will be ineligible. The next application deadline, April 30, 2014, is for the fall 2014 semester.



The New York Times Available on Campus and Online



Be sure to stop by the Graduate Student Commons and pick up your free copy of The New York Times. E-subscriptions are also available: NYTimes.com/Passes

The GPSA provides hard copies of *The New York Times* in the main lobby of the William S. Boyd Law School and the Graduate Student Commons, LLB 2141. The GPSA also belongs to *The New York Times* Readership program. UNLV log-ins are limited to 200 daily e-passes. These passes provide full, complimentary access for 24 hours to *The New York Times* website and *The NY Times* smartphone apps. This does not include e-reader editions, premium crosswords or *The New York Times* crosswords apps. *The NY Times* apps are not supported on all devices. Other restrictions may apply. For more information: <http://www.gpsa.edu>.

Graduate College Thesis and Dissertation Workshops Part I & Part II

Thesis / Dissertation Guidelines and Formatting (Part I): "All You Need to Know!"

Friday, February 7, 2014; 11:00am—12:30pm; Graduate Student Commons, LLB 2141 Join the Graduate College staff for an informative workshop to discuss the guidelines and formatting requirements for your thesis / dissertation.

Thesis / Dissertation Guidelines and Formatting (Part II): "Getting the Details Right in Microsoft Word!"

Friday, March 7, 2014; 11:00am—12:30pm; Graduate Student Commons, LLB 2141

Join the Graduate College staff for an informative workshop to discuss using Microsoft Office to format your thesis / dissertation.

Space is limited. Register today. Registration is only available through your RebelMail account. For more detailed workshop information please visit: <http://graduatecollege.unlv.edu>

2014 GPSA/Graduate College Professional Development Workshops

Making the most of your Google Tools & Creating a Strong E-Portfolio

Friday, February 21, 2014; 11:30am – 1:00pm

Location – Amargosa Room, Lied Library (1st floor)

Facilitator: Peter Gray, Associate Professor, Department of Anthropology

Panelists:

Chinam Seto, Google Apps Administrator, Office of Information Technology

Kendall Hartley, Associate Dean Graduate College, Associate Professor, Department of Teaching & Learning

Space is limited. To register and for more detailed workshop information please visit:

<http://www.unlv.edu/gpsa/development>.

Polishing your Presentation Skills & Preparing an Excellent Poster

Friday, March 14, 2014; 11:30am – 1:00pm

Location – Amargosa Room, Lied Library (1st floor)

Facilitator: Peter Gray, Associate Professor, Department of Anthropology

Panelists:

David Montgomery-Blake, Computer Facilities Supervisor

Javier Rodriguez, Associate Dean College of Sciences, Associate Professor School of Life Sciences

Sharon Young, PhD Candidate Department of Anthropology

Space is limited. To register and for more detailed workshop information please visit:

<http://www.unlv.edu/gpsa/development>.

Graduate College - Graduation Deadlines for Spring 2014

Saturday, March 1, 2014

Final day to apply and submit application for graduation through MyUNLV account.

Please note: A \$75 graduation and commencement fee will be placed on your student account (one fee per degree/certificate) beginning the first day of registration for the semester in which you have applied to graduate, or, if registration has already opened, your fee will be applied within two business days.



Saturday, April 12, 2014

Last day to take comprehensive exam, or to defend your thesis or dissertation.

Friday, April 18, 2014

Last day to submit the final, properly formatted hard copy of your thesis or dissertation on 20lb watermark bond paper to the Graduate College for final format review; all final exam results and final documents must be submitted to the Graduate College by this date.

Friday, May 12, 2014

Last day for electronic submission of final thesis/dissertation (with formatting pre-approved by the Graduate College) to ProQuest.

Tuesday, May 17, 2014

UNLV Commencement at the Thomas and Mack Center— Ceremonies at 9:00am and 2:00pm.. More information available at: <http://www.unlv.edu/commencement>.



Endorsement of UNLV Medical School—GPSA Resolution no. 8

The GPSA Council voted on a resolution in support of bringing a medical school to Las Vegas during the November 4th 2013 council meeting. The GPSA adopted the Faculty Senate medical school resolution and made adjustments based on specific issues important to graduate and professional students. The resolution highlights the benefits for bringing a medical school to the Las Vegas community. The GPSA council voted to add two additional statements to the document. First, the council added a line specifying support for bringing more research opportunities to the Las Vegas community and UNLV. Secondly, a quantifier supporting the educational and community impact that will follow the addition of a medical school in Las Vegas.



UNLV Cares Food Pantry, a GPSA recognized student organization, collects donations from the UNLV community to assist students and staff during these tough economic times. The idea is to provide a mode of support for members of the UNLV community struggling to afford food through a discreet system that allows Rebels to help one another.

We are counting on campus generosity to restock our shelves. Please drop off canned goods and nonperishable foods in donation boxes located at: Lied Library, Student Union, and the Student Wellness and Recreation Center. Please contact us to arrange any donation that the boxes may not accommodate.

IDs are not checked of those that utilize the Food Pantry. Policy is: open to everyone at UNLV.

Also, if you are in a teaching position please let your students know that this resource is available to them.

The UNLV Cares Food Pantry is located at the UNLV Paradise Campus: 851 E. Tropicana Ave. Las Vegas, NV 89119

The pantry is located in the PAR6 building, which is in the back of the Paradise Campus.

Pantry times:

1pm to 6pm

Pantry dates:

Wednesday, January 29th and Thursday, January 30th

Wednesday, February 5th and Thursday, February 6th

Wednesday, February 19th and Thursday, February 20th

Wednesday, March 5th and Thursday, March 6th

Wednesday, March 19th and Thursday March 20th

Wednesday, April 2nd and Thursday, April 3rd

Wednesday, April 16th and Thursday, April 17th

Wednesday, April 30th

Thursday, May 1st

Wednesday, May 14th and Thursday, May 15th

Email: unlvcaresfoodpantry@gmail.com

Facebook: <https://www.facebook.com/UNLVCaresFoodPantry> Phone: 702-895-2261

The UNLV Cares Food Pantry's contributing members are: GPSA ❖ NV Faculty Alliance ❖ CSUN Presidential Advisory Committee ❖ Classified Staff Council

Don't miss out on GPSA Funding Opportunities

GPSA Research and Conference Travel Sponsorships

Need funding for your research project or to attend a conference during the summer 2015 semester? GPSA sponsorship information and application are available at <http://gpsa.unlv.edu/grant.htm>. For the academic year 2013-2014, the GPSA has allocated \$100,000 for student research and conference travel. This year the Graduate College has contributed \$50,000 towards supplementing the Sponsorship program. This \$50,000 is earmarked for supporting tier 1 applicants' research projects. Deadline for the GPSA Summer 2014 sponsorship is **March 15, 2014**. Fall 2014 sponsorship deadline is **April 15, 2014**. Also available are emergency travel funding (for conference presentation only). Check the GPSA website to see if you qualify.

2014 Graduate & Professional Student Research Forum

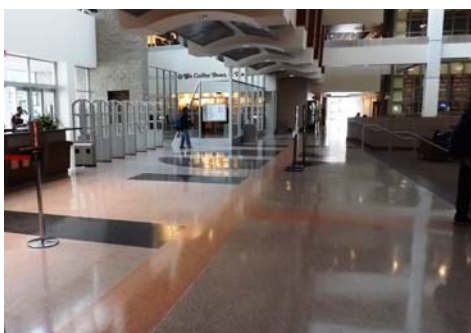
The Graduate and Professional Student Research Forum is an annual event for students across campus to come together and share their research with fellow students and faculty. Students can present their research either as a poster or in an oral presentation. This provides an opportunity for students to practice presenting for future conferences in a professional setting. The Forum is open to all graduate and professional students at UNLV. This year the GPSA has allocated \$150,000 to fund students for research and conference travel. Any graduate and/or professional student who has received GPSA funding for the 2013-2014 year are required to present at the Forum. Awards for outstanding presentations are announced at the end of the event. Faculty are also encouraged to attend to support their students research and to see other research being conducted campus-wide.

- This year's Graduate and Professional Student Research Forum will be held on **March 29th** on the second floor of the Student Union Building.
- To register or to get more information about the event visit the GPSA's website at <http://gpsa.unlv.edu/forum/>.
- The deadline to register is **Friday, February 28th**.



All Research Forum participants check-in the morning of the event

Lied Library Enhancement Project



The Lied Library opened its doors this spring semester to greet students with a new look

Over the winter break, Lied Library went through a flooring overhaul. The Library repaired and resurfaced a significant portion of the walkways and adjacent areas on the first floor using terrazzo, a product developed for high-traffic areas. The project included areas near entrances and the Circulation Desk.

The project was completed to address many safety challenges with the various types of flooring materials used and awkward transitions from cement flooring to carpeted areas. Resurfacing eliminated the tripping hazards and provides a safer and more aesthetically-pleasing environment. The current floor was removed, repaired in places and replaced. New signage throughout the library will soon be in place.

Noteworthy UNLV Dates

Graduate & Professional
Student Association
University of Nevada, Las Vegas
4505 S. Maryland Parkway
Las Vegas, NV 89154-1007

Phone: 702-895-2261
Fax: 702-895-2158
gpsa@unlv.edu

Visit the GPSA at:
<http://gpsa.unlv.edu/>

Information and dates of
UNLV student activities can
be found at:
<http://activities.unlv.edu/>

Attend UNLV athletic events
for free, more information:
[http://www.unlvtickets.com/
students/](http://www.unlvtickets.com/students/)

Follow GPSA on:

facebook

twitter

GPSA newsletter archives are available: <http://gpsa.unlv.edu/newsletter/>

This newsletter is brought to you by the
Publications Committee: Chair Meghan Pierce, Malori Clarke,
Shelbi Schroeder and Surbhi Sharma

January 21 Instruction Begins

January 21—24 First week of instruction: bagels and coffee; Graduate Student Commons, LLB 2141

February 3 GPSA Council Meeting @ 2:00—3:30pm; Student Union room 208 B & C

February 5 Nutrition Workshop: Food Intolerances & Allergies @ noon—1:00pm; Rod Lee Bigelow Health Sciences Room 212

February 8 Men's Rebel Basketball v. Wyoming State @ 7:00pm; Thomas & Mack Center.

February 10 Barrick Lecture: Ray Kurzweil: Ray Kurzweil is one of the world's leading inventors, thinkers, and futurists; 7:30—9pm at Artemus W. Ham Concert Hall. Event is free but tickets are required. <http://pac.unlv.edu/barrick.php>

February 17 Presidents' Day—no instruction

February 18 Healthy Cooking Demos@ noon—1:00pm; Rod Lee Bigelow Health Sciences Room 212

March 3 GPSA Council Meeting @ 2:00—3:30pm; Student Union room 208 B & C

March 17—22 Spring Break—no instruction

March 29 Graduate & Professional Student Research Forum; 8:00am—2:00pm; Student Union 2nd floor
<http://www.unlv.edu/gpsa/forum>

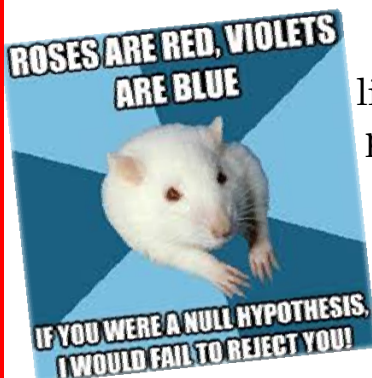
GPSA Pre-Valentine's Day Mixer

February 13th 2014 @ 5:00—8:00pm
PT's at 1089 E. Tropicana Avenue

Is graduate / professional school taking a toll on your love life? Do you want to meet someone who understands and appreciates graduate / professional student life? Then come to PT's on Tropicana on Thursday February 13th to meet and mingle with UNLV graduate and professional students.

Free appetizers!!

UNLV ID required / Questions:702-895-2261





GPSA – Spring Semester 2014




Schedule of Events



January

February

March

Sunday	Monday	Tuesday	Wednesday	Thursday	Friday	Saturday
12 	13	14	15	16	17 New Graduate Student Orientation Marjorie Barrick Museum 2-6pm	18
19	20 Martin Luther King, Jr. Day Recess 	21 Spring Semester Instruction Begins Bagels & coffee Graduate Student Commons, LLB 2141, 7:30am – 11am	22 Bagels & coffee Graduate Student Commons, LLB 2141, 7:30am – 11am	23 Bagels & coffee Graduate Student Commons, LLB 2141, 7:30am – 11am	24 Bagels & coffee Graduate Student Commons, LLB 2141, 7:30am – 11am	25
26	27	28	29	30	31 Graduate Student Workshop "Logistics of the Job Interview" 11:30am – noon Amargosa Room	1
2	3 GPSA Council Meeting SU 208 B & C 2:00-3:30pm	4	5	6	7 Graduate College Workshop: Thesis & Dissertation Part I LLB 2141 11:00am – 12:30pm	8
9	10	11	12	13 GPSA Pre- Valentine's Day Singles Mixer PT Pub's on Tropicana 5 – 8pm	14	15
16	17 Washington's Birthday Recess 	18	19	20	21 Graduate Student Workshop "Making the most of your Google Tools" 11:30am – noon Amargosa Room	22
23	24	25	26	27	28 Graduate & Professional Student Research Forum Application Deadline	1
2	3 GPSA Council Meeting SU 208 B & C 2:00-3:30pm	4	5	6	7 Graduate College Workshop: Thesis & Dissertation Part I LLB 2141 11:00am – 12:30pm	8
9	10 Coffee & Scones Graduate Student Commons, LLB 2141 3:00m – 6pm	11 Coffee & Scones Graduate Student Commons, LLB 2141 3:00m – 6pm	12 Coffee & Scones Graduate Student Commons, LLB 2141 3:00m – 6pm	13 Coffee & Scones Graduate Student Commons, LLB 2141 3:00m – 6pm	14 Graduate Student Workshop "Polishing your Presentation Skill" 11:30am – noon Amargosa Room Coffee & Scones Graduate Student Commons, LLB 2141 3:00m – 6pm	15 GPSA Sponsorship Fall 2014 Applications Deadline: http://gpsa.unlv.edu/sponsorship.html
16	17	18	19	20	21	22 Spring Break – No Instruction

For more information: <http://gpsa.unlv.edu/> or call 702-895-2261

GPSA – Spring Semester 2014

Schedule of Events



April

May

Sunday	Monday	Tuesday	Wednesday	Thursday	Friday	Saturday
23	24	25	26	27	28	29 Graduate & Professional Student Research Forum 8:00am – 2:00pm Student Union
30	31	1	2	3	4	5
6	7 GPSA Council Mtg. SU 208 B & C 2:00-3:30pm E- Board Elections	8 E- Board Elections 2014 - 2015	9 E- Board Elections 2014 - 2015	10 E- Board Elections 2014 - 2015	11 E- Board Elections 2014 - 2015	12
13	14	15 GPSA Sponsorship Summer Applications Deadline: http://gpsa.unlv.edu/sponsorship.html	16	17	18	19
20	21	22	23	24	25	26
27	28	29	30 GPSA Book Scholarship Deadline: http://gpsa.unlv.edu/sponsorship	1	2	3
4	5 GPSA Council Meeting SU 208 B & C 2:00-3:30pm Bagels & coffee Graduate Student Commons, LLB 2141, 7:30am – 11am	6 Bagels & coffee Graduate Student Commons, LLB 2141, 7:30am – 11am	7 Bagels & coffee Graduate Student Commons, LLB 2141, 7:30am – 11am	8 Bagels & coffee Graduate Student Commons, LLB 2141, 7:30am – 11am	9 Bagels & coffee Graduate Student Commons, LLB 2141, 7:30am – 11am	10
11	12	13	14	15	16	17  Spring Semester Ends Commencement Thomas & Mack Center 9:00am & 2:00pm
18	19 Summer Semester Instruction Begins	20	21	22	23	24

For more information: <http://gpsa.unlv.edu/> or call 702-895-2261

